



# Release Notes

CIVIL CONSTRUCTION  
January 25, 2021 RELEASE

## WorksOS

---

<b>New &amp; Improved</b>	<b>2</b>
Usability	2
<b>Fixed</b>	<b>3</b>
<b>Other</b>	<b>3</b>
Known issues	3
Supported Languages	3

---

<http://sitech.business.trimble.com>


© 2020, Trimble Inc. All rights reserved. Trimble and the Globe & Triangle logo are trademarks of Trimble Inc. registered in the United States and in other countries. All other trademarks are the property of their respective owners.

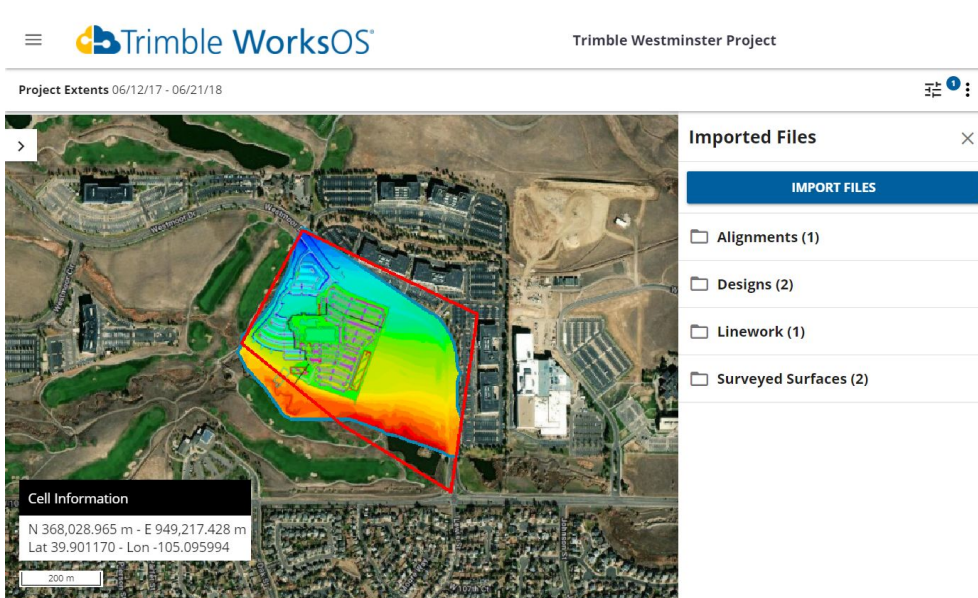
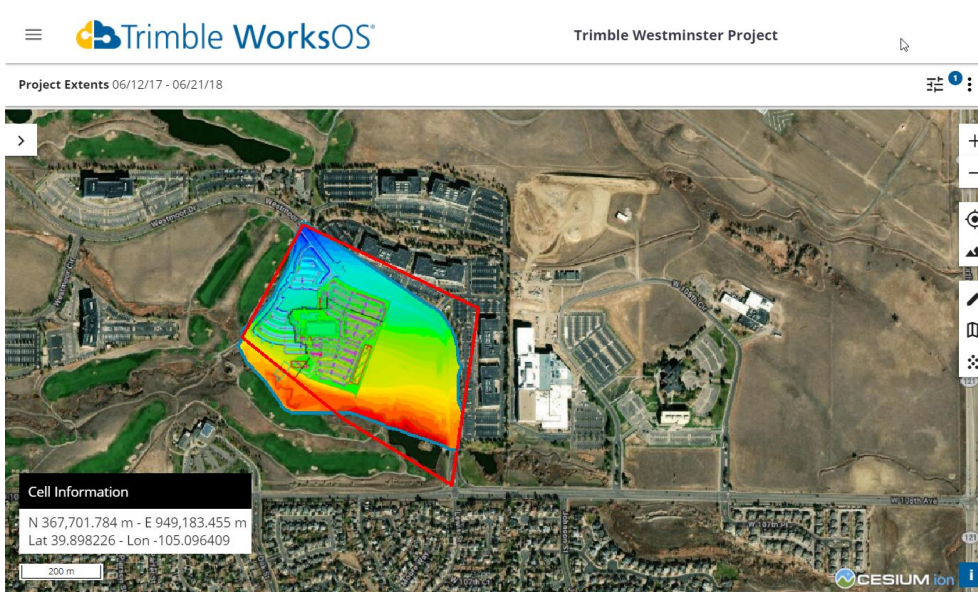


# New & Improved

This WorksOS release includes these new features and enhancements:

## Usability

- **Improved Imports Workflow** - When you click the  More icon on the Actions bar and select Imports, a pane now appears to the right of the Map View and Dashboard, rather than hiding them. This interface enhancement enables you to import, show/hide, delete, and manage files while keeping the Map and Dashboard visible so you can see the changes in your data.





## Fixed

WorksOS also deployed fixes for reported or discovered cases in which:

- Elevation filters did not work. (SF: 04084867)
- Design to Filter gave inconsistent map tiles in Profile vs Map. (SF: 04084867)



## Other

### Known issues

- Back end performance improvements to dashboard loading and tile rendering is currently in development.

### Supported Languages

The WorksOS program interface is available in these languages:

- |                      |             |
|----------------------|-------------|
| • Dutch              | • Italian   |
| • English (American) | • Japanese  |
| • French             | • Norwegian |
| • German             | • Spanish   |

WorksOS program help and documentation is available in these languages:

- English (American)