

Release Notes

CIVIL DESIGN AND ENGINEERING

March 2022

Quantm 2022.1

Integration and Workflows	2
Quadri-Quantm Corridor 50 km bundle	2
Tekla Civil Bundle	2
Quantm Corridor - Boundary Export	3
Updated User Interface	4
New useful icons in the shortcut quick menu bar	4
New Enhancements & Features	4
Import KML/KMZ polygons and alignments	4
Manual Alignment adjustment for no geometric alignments	6
View Culvert in plan/profile	7
View Retaining walls in plan and profile	7
Add ditch for cut and fill	9
Adjust length and slope of inner and outer ditch	10
Favorites for saved alignments	11
Minimum grade	12
CO2 % yearly road traffic increase	13
Fixed	14
Quantm integrations	15
Reaching Sales, Support, and the Community	16



Integration and Workflows

Quadri-Quantm Corridor 50 km bundle

Quadri Business Premium users now have Quantm Corridor 50 km included in their license.

- ☒ Quadri
- ☒ Quadri Desktop
- ☒ Quadri Easy Access
- ☒ Quantm Corridor 50 km
- ☒ Topics Flow Manager
- ☒ Trimble Connect Business Premium

Quantm corridor 50 km is a version of Quantm to identify optimal areas and corridors on a very early stage and during the first concepts. It differs from Quantm that is used in the preliminary phase where validation, comparison and optimizations of alignment with reduced earthwork, structure, land use, costs and CO2 is in focus.

Tekla Civil Bundle

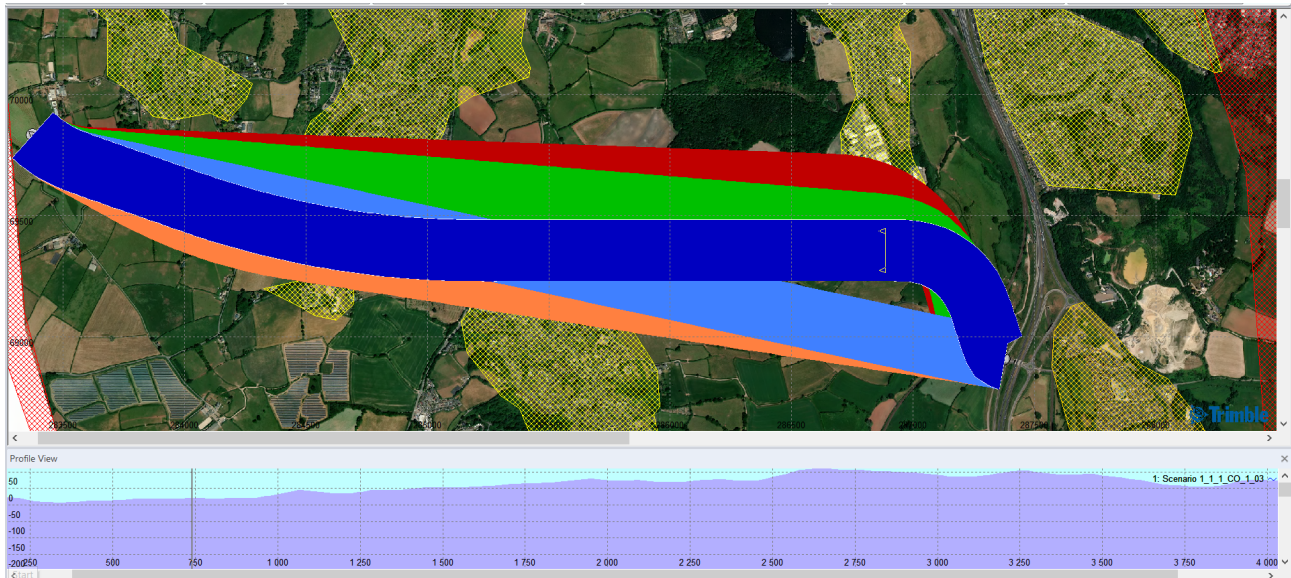
Tekla Civil users in Finland now have Quantm Corridor 50 km included in their license.

- ☒ Tekla Civil
- ☒ Quantm Corridor 50 km

Quantm Corridor - Boundary Export

Option to export the corridor boundary to X,Y,Z format.

Also Able to send the corridor boundary direct to Quadri via the API connector.



Export Selected Corridors

Export format

XYZ

Quadri

☐ Include earthwork footprint

☐ Convert to imperial units

OK

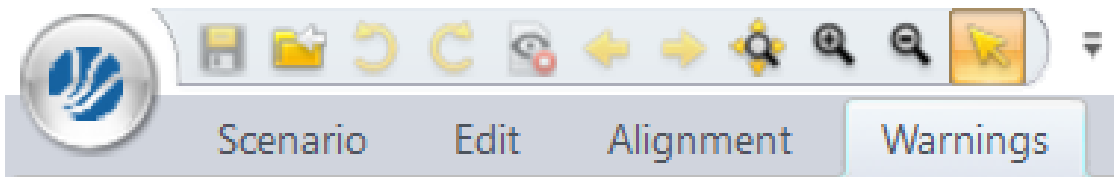
Cancel



Updated User Interface

New useful icons in the shortcut quick menu bar

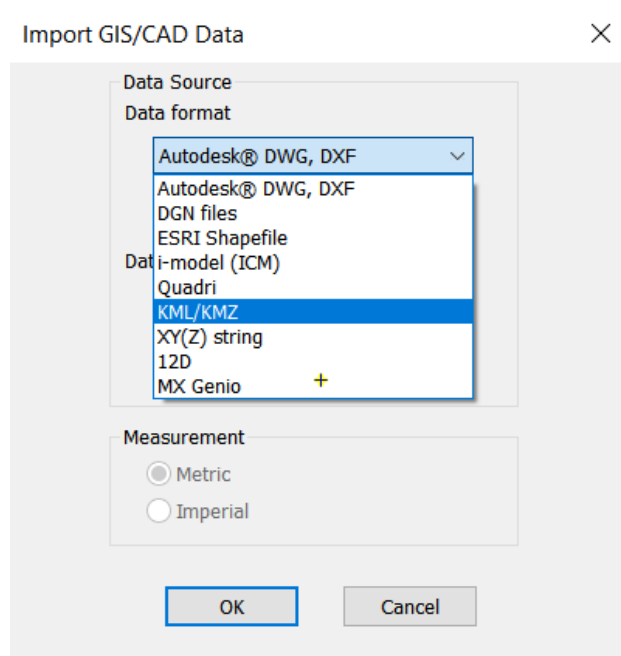
“End review” and “close scenario” is set by default to the quick access toolbar



New Enhancements & Features

Import KML/KMZ polygons and alignments

- Able to import GIS areas and zones from Google Earth



- Able to import alignments from Google Earth

Import Alignment



Alignment format	XYZ Centerline String
Alignment file	XYZ Centerline String
	AutoCAD DXF
	ESRI Shape
Quadri task	Quantm Desktop V4 A3D
	KML/KMZ
Source measurement	i-model (ICM)
	LandXML
	Quadri
Import alignment as	Third Party Road Definition File

☐ Snap to start/finish points

OK Cancel

Manual Alignment adjustment for no geometric alignments

Possible to manually adjust horizontal and vertical interactions points (HIP and VIP) for non geometric alignments by right click on the alignment, duplicate as editable and then adjust the intersection points manually.

Corridor Identification

Optimization Type

☒ Free to Roam ☐ Geometric

☐ Quick Seed ☒ Curvilinear

☐ Corridor Corridor Width (m)

Name

Job name:

Number of Alignments (13)

Description

Free to Roam Optimization – Produces a sample of alignments exploring the available land surface

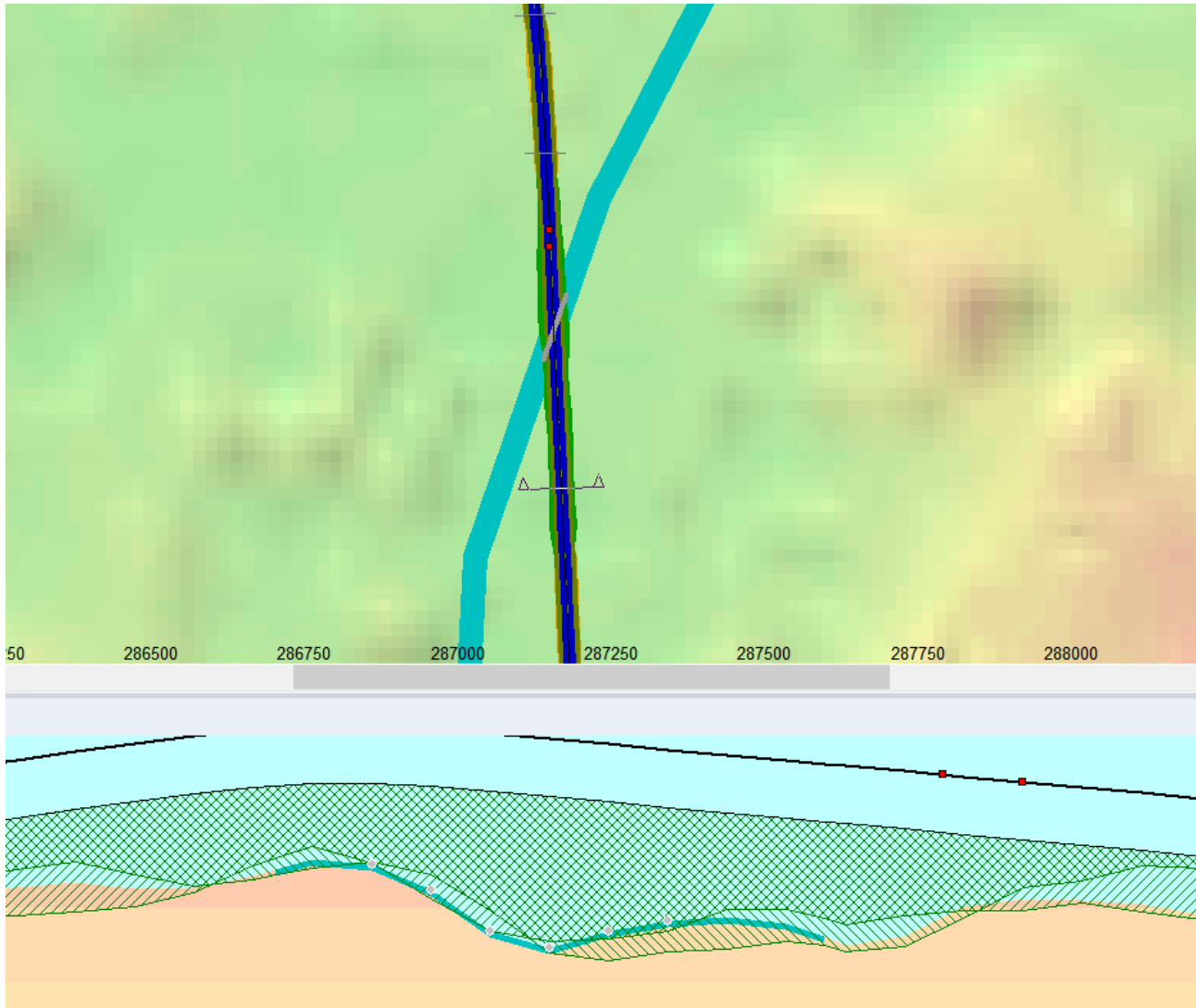
Notes:

Submit by:



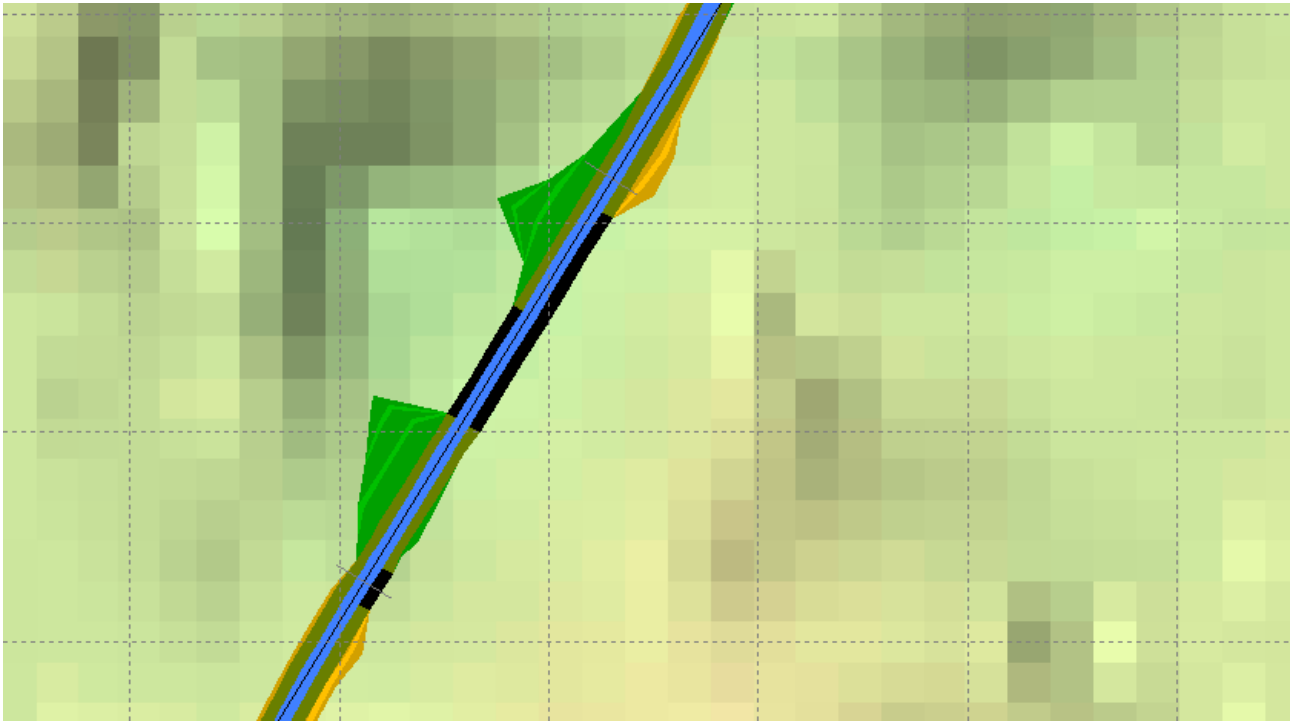
View Culvert in plan/profile

View culverts in plan and profile (gray color)



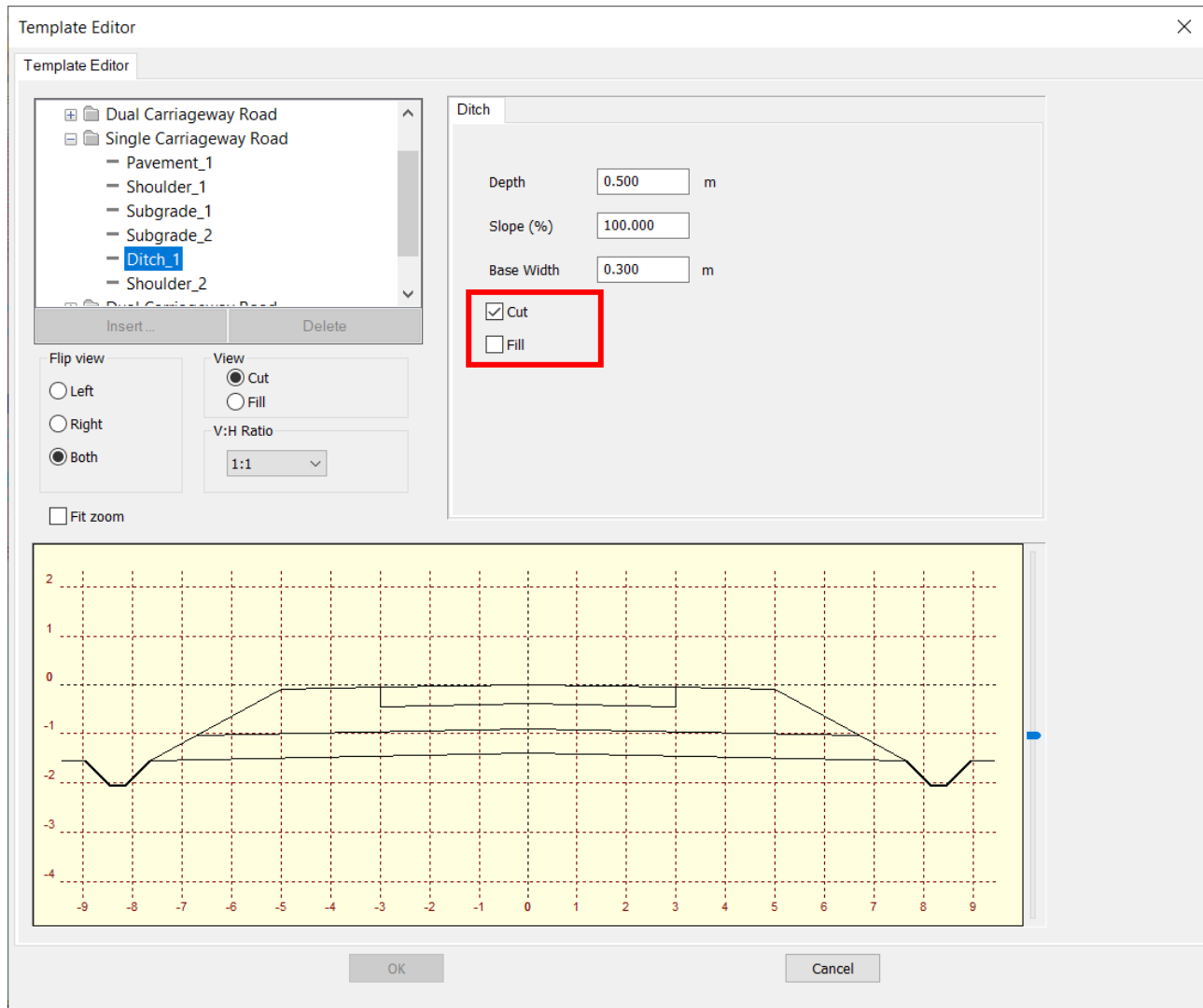
View Retaining walls in plan and profile

View retaining walls in plan and profile, also near tunnels (black color).



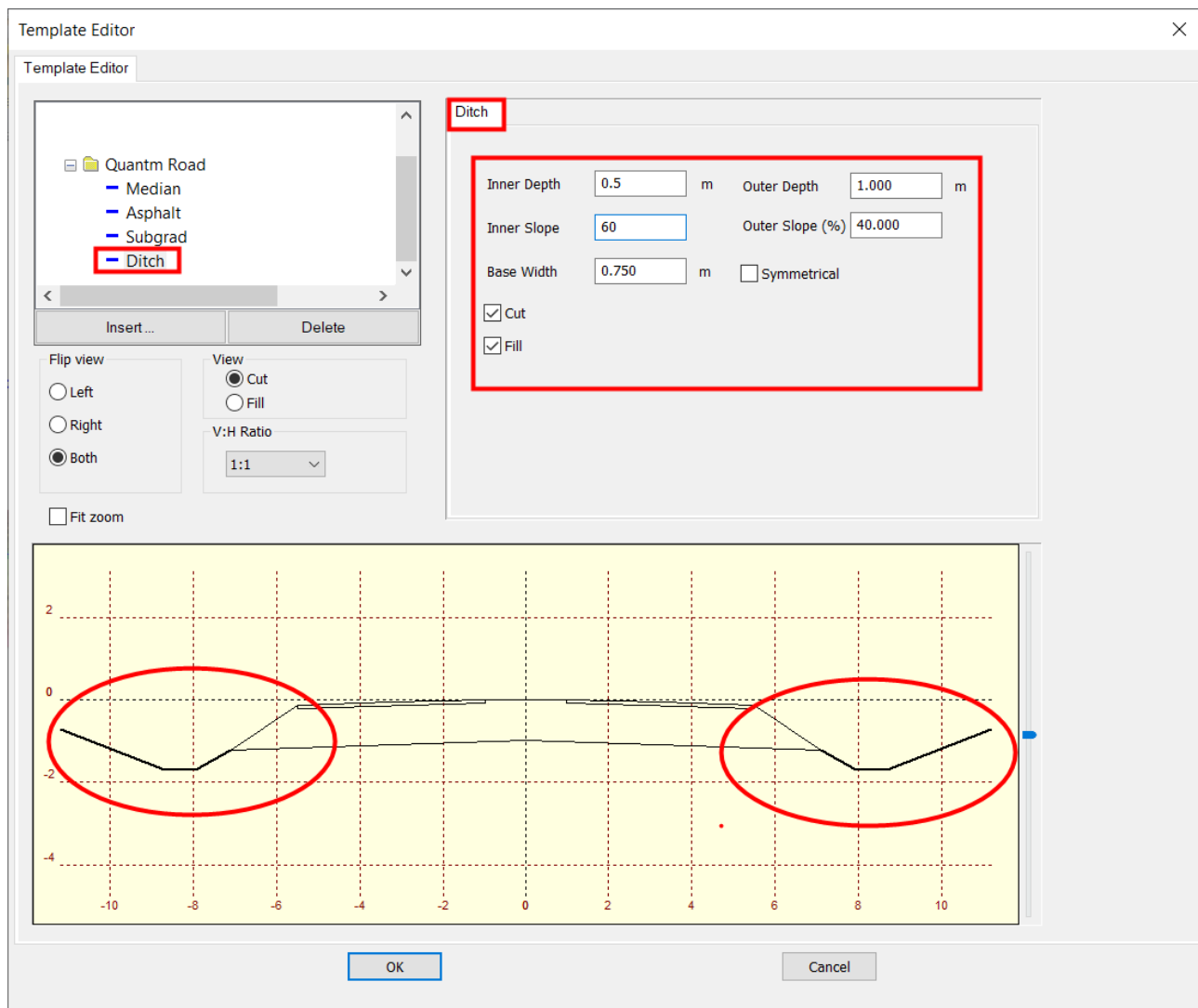
Add ditch for cut and fill

Ability to add ditch for both cut and fill.

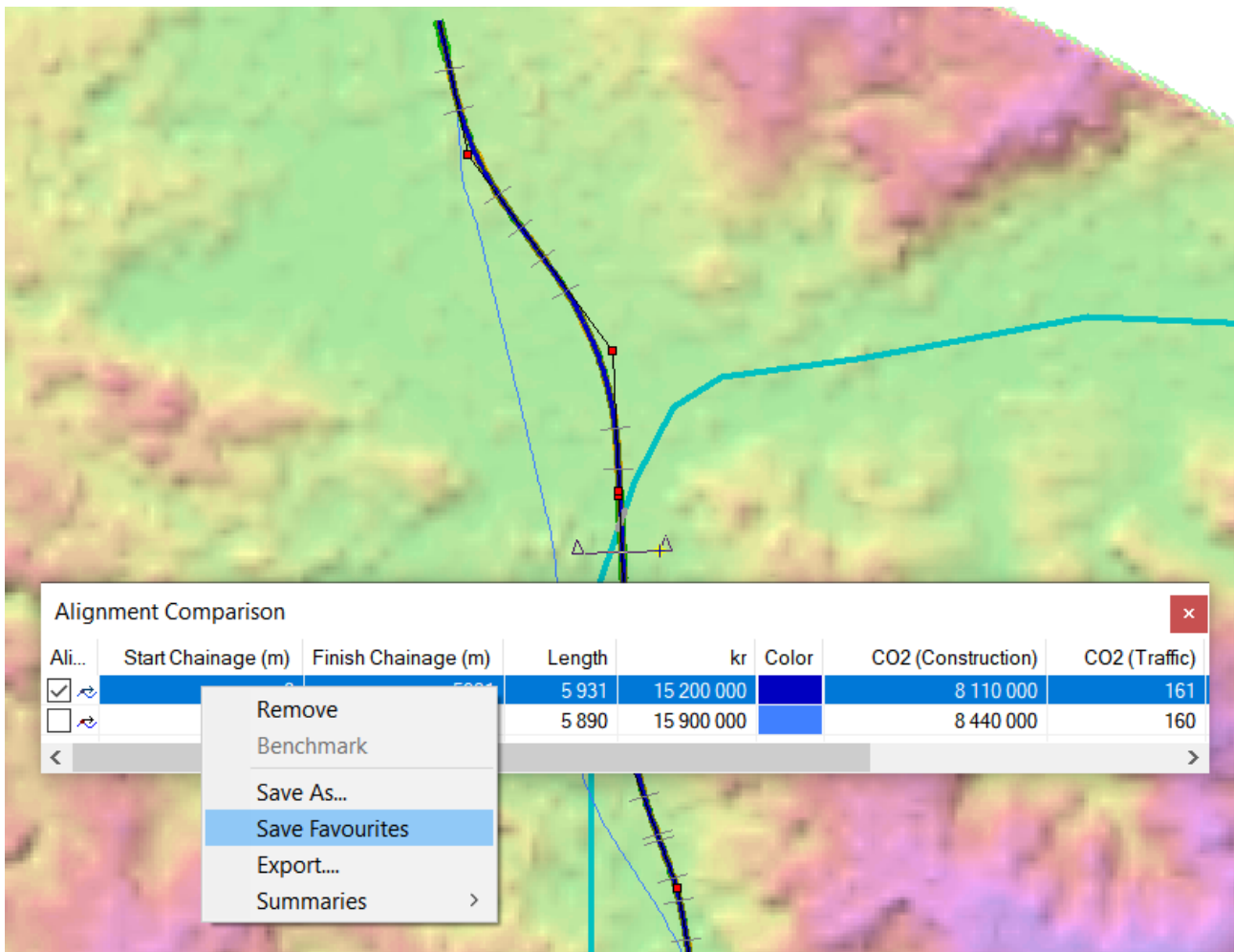


Adjust length and slope of inner and outer ditch

Ability to adjust the inner and outer length and slope for the ditch



Favorites for saved alignments



Minimum grade

Option to apply a minimum grade

Geometric Parameters (read only) ✕

Geometry type

110 km/h

80 km/h

90 km/h

70 km/h

Horizontal

Vertical

Grade

Template

Downhill

Sustained Grade...	Max Grade...	Sample Length (m)
-2.000	-2.000	20000.000

Uphill

Sustained Grade...	Max Grade...	Sample Length (m)
2.000	2.000	20000.000

Minimum Grade

Downhill (%)

0

Uphill (%)

0

OK

Cancel

CO2 % yearly road traffic increase

CO2 Traffic. Option to add % number of yearly increase in the traffic. Eks. 10% each year

CO2 Report

Alignment:

Traffic Composition

Cars (Petrol)	<input type="text" value="50.000"/>	%
Cars (Diesel)	<input type="text" value="20.000"/>	%
Trucks	<input type="text" value="15.000"/>	%
Cars (Other)	<input type="text" value="10.000"/>	%
Cars (Emission Free)	<input type="text" value="5.000"/>	%
Total	<input type="text" value="100.00"/>	%

Traffic Flow

Average Speed	<input type="text" value="100"/>	(km/hr)
Daily Traffic Flow	<input type="text" value="10000.000"/>	

Environmental Impact

Fuel Consumption	<input type="text" value="67946.866"/>	litres
CO2 Emissions	<input type="text" value="160.961"/>	tonnes
<input type="radio"/> Daily	<input checked="" type="radio"/> Years	<input type="text" value="100"/> ▾
Yearly Growth in Traffic	<input type="text" value="10"/>	%

Recalculate

Recalculate All

Report

Vehicle Parameters

OK

Cancel



Fixed

Updated End User Licenses Agreement and added to the installation

Now it's possible to select single or double deck bridges

Review lanes and cars in proper scale in the 3D visualizer

Bug fix when using tab to move between dialog boxes in local and global earthworks

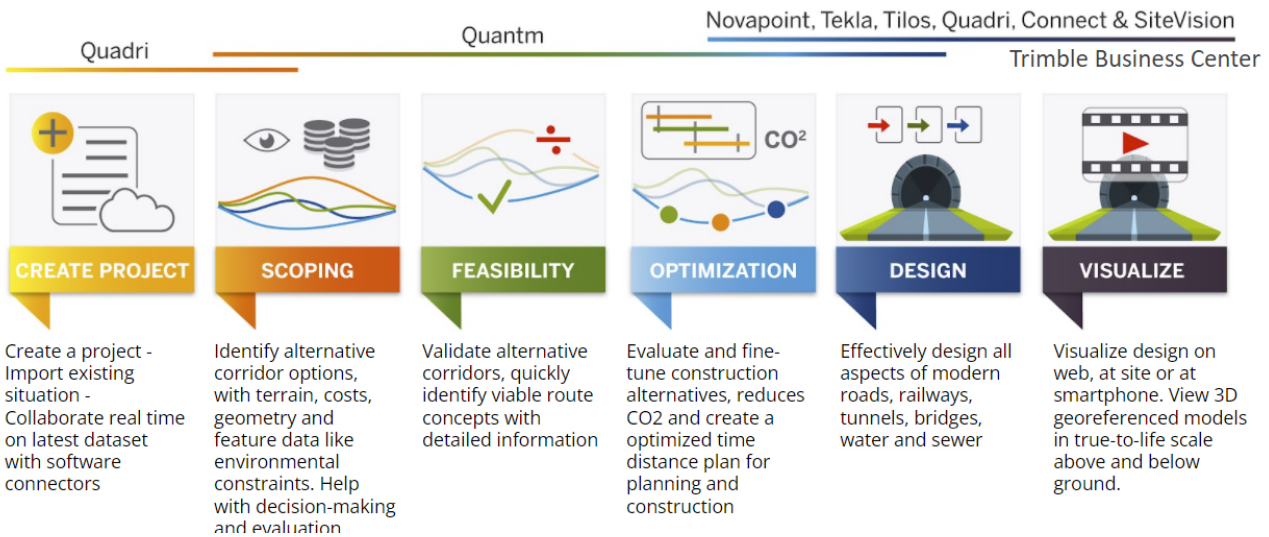
Include Information about stations for tunnels and bridges in XML exports

Bug fix in the Legend dialog box for correct scaling

Bug fix for large rows for Fill and Geology in Cost Parameters

Bug fix for import of DWG

Zoom in on selected objects



Reaching Sales, Support, and the Community

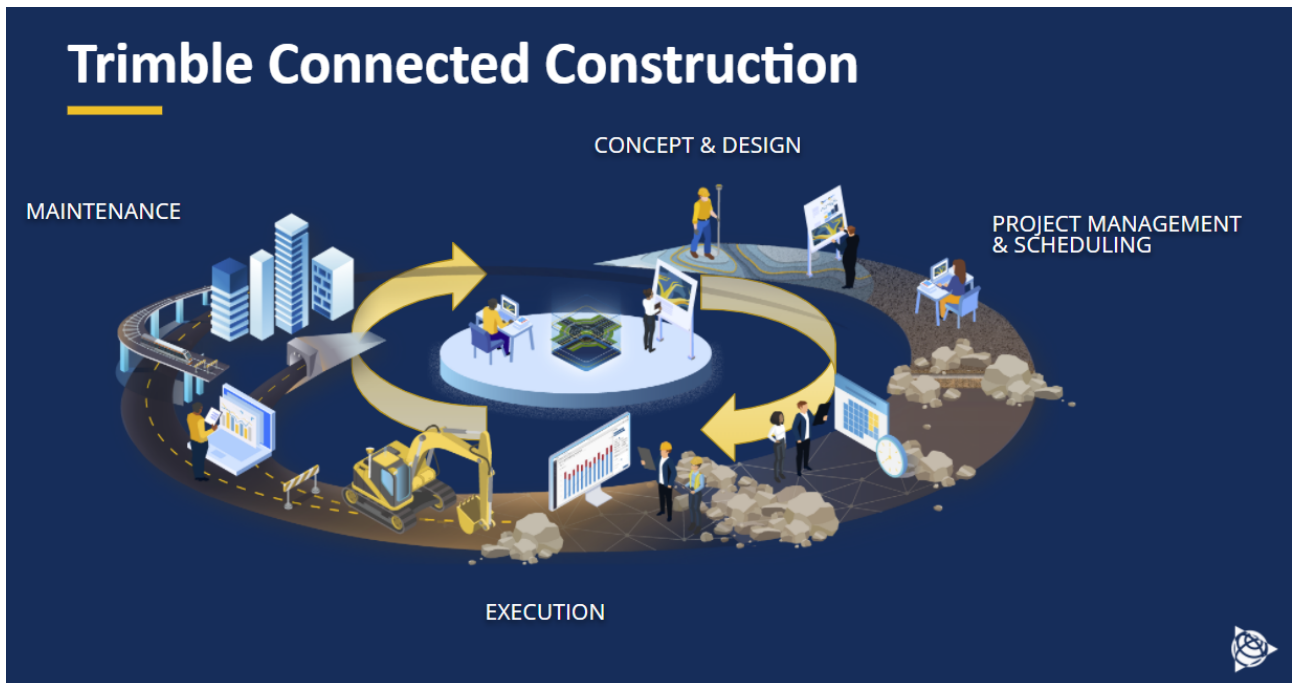
For more information, please use these resources:

Quantm Resource Center

Search for release notes, installation guide, license activation guide, learning guides, and technical articles, and more in the [Quantm Resource Center!](#)

Quantm Support mail: civil.support@trimble.com

Trimble Connected Construction, Read more [here](#).



Trimble 2022 All rights reserved. Duplication is strictly prohibited. All trademarks registered.