



Support Bulletin

Penmap Project Manager / Penmap for Android user defined csv format

GEOSPATIAL, January 2021

The following support bulletin explains how to define a user specific csv format to **export point related measurement data via Penmap Project Manager** and Penmap for Android version 11

Requires minimum Penmap Project Manager version 10.8.6.1456.

Penmap Project Manager	2
Define csv export format	2
Example format string for a GNSS point with all parameters	3
Export result	3
Export csv via Penmap Project Manager	3
Available Parameters/ format string	3
Available units	4
Value separator	4
Parameter explanation for special values	5
Export csv via Penmap for Android (version 11 and higher)	6
Contact	6

<https://geospatial.trimble.com>

www.trimble.com

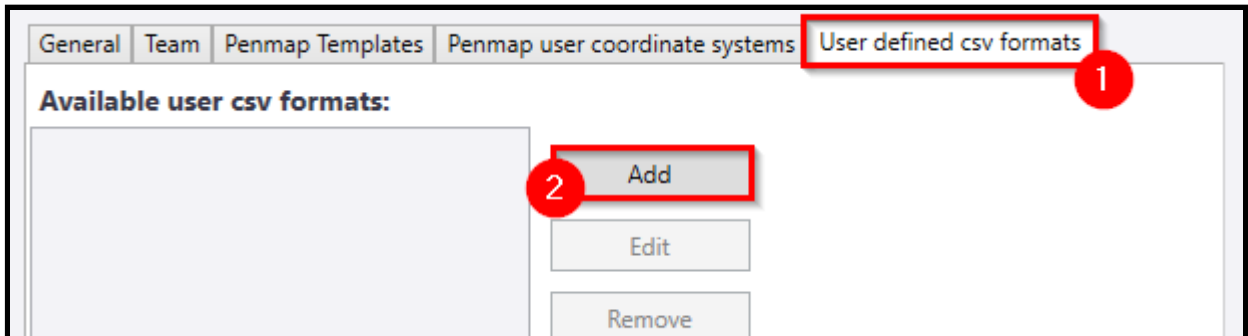
Penmap Project Manager

The csv format to export point related measurement data can be defined via Penmap Project Manager.

Define csv export format

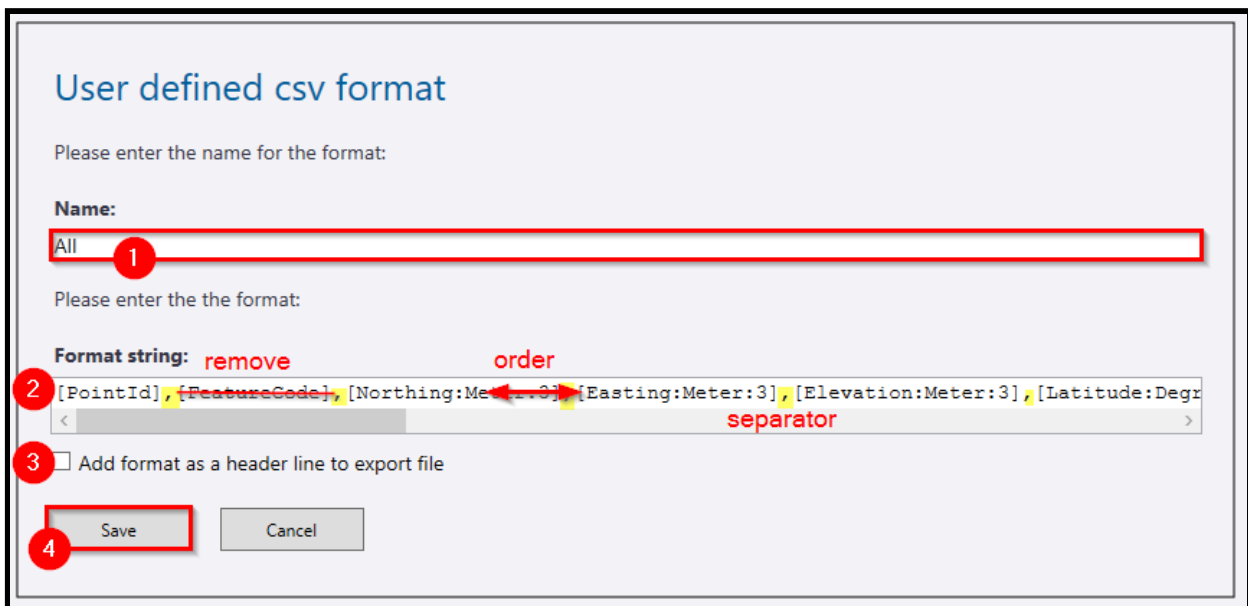
Start Penmap Project Manager, select your **Trimble Connect project** and open the **Settings**

Go to **[User defined csv formats]** to **Add** a new format definition. It's possible to edit the format string or remove your user defined format here as well.



Find a predefined format string with all available parameters.

1. Enter the **Name**, which is shown later in Download dialog
2. Check the **Format string** ([find more here](#))
 - a. remove the parameters not needed
 - b. check order
 - c. check separator
3. Add the format string as header
4. **Save** the format



Example format string for a GNSS point with all parameters

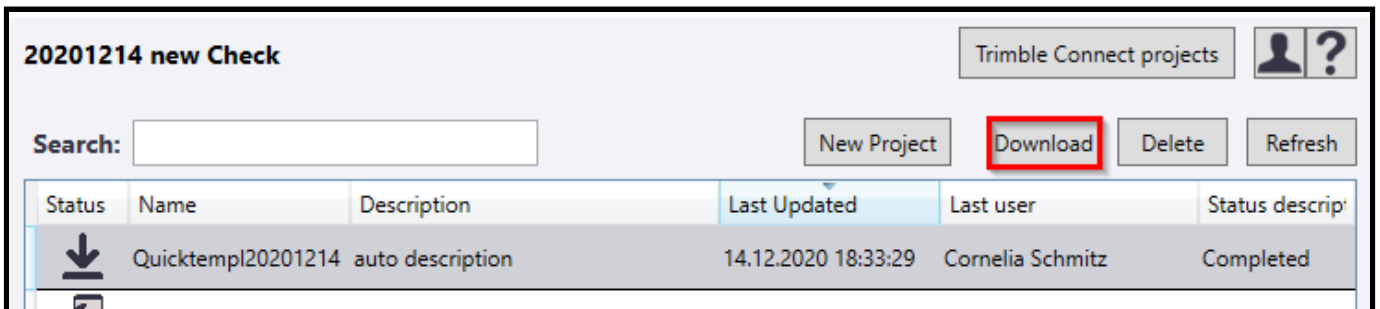
```
[PointId],[FeatureCode],[Northing:Meter:3],[Easting:Meter:3],[Elevation:Meter:3],[Latitude:Degree:9],[Longitude:Degree:9],[EllipsoidHeight:Meter:3],[Pdop],[Rms3D:Meter:3],[Rms2D:Meter:3],[SatEpochs],[SatCount],[SatQuality],[CorrectionMode],[AntHeight:Meter:3],[AntOffset:Meter:3],[UtcDateTime],[PointType]
```

Export result

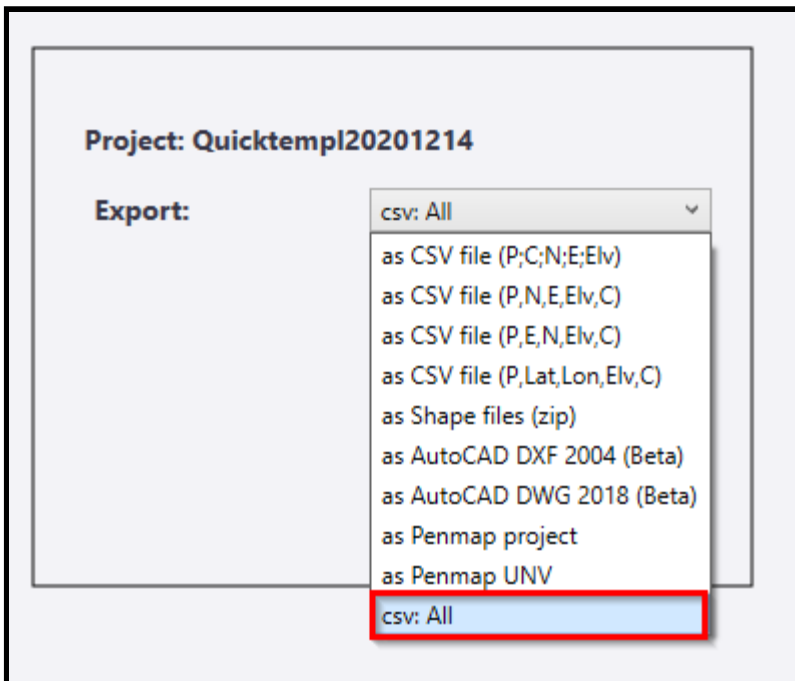
```
7,3,5807299.068,32529273.978,54.337,52.415131,9.430413,97.218,2,1.148,0.68,5,11,Float,Ntrip,2.065,0.065,2020-11-18 13:08:04Z,GPSPoint
```

Export csv via Penmap Project Manager

If your project is **completed** and uploaded to Trimble Connect you can use the user defined format at **Download**



The user defined format is shown as **csv:<Name>**.



Available Parameters/ format string

The parameter is written in “[]”, some of them can be adjusted in units and decimals.

<https://geospatial.trimble.com>

www.trimble.com

Units and decimals can be set via format string e.g. [Northing:UsFeet:2] will export northing with 2 decimals in usfeet coordinates.

Just using the parameter will export the default values as described in the example string. For example [Northing] is exported in meters with 3 decimals.

Units and parameters are not case sensitive.

The following parameters are **only supported for GNSS-Points**.

```
[Latitude], [Longitude], [EllipsoidHeight], [Pdop], [Rms3D], [Rms2D], [SatEpochs], [SatCount], [SatQuality], [CorrectionMode], [AntHeight], [AntOffset], [UtcDateTime]
```

Available units

For some parameters it's possible to use different units. If the value is not recognized the export falls back to the default values.

Meter, UsFeet, Feet can be used for

```
[Northing:Meter:3], [Easting:Meter:3], [Elevation:Meter:3]
[EllipsoidHeight:Meter:3]
[Rms3D:Meter:3], [Rms2D:Meter:3], [AntHeight:Meter:3], [AntOffset:Meter:3]
```

Degree is only for

```
[Latitude:Degree:15], [Longitude:Degree:15]
```

UtcDateTime is the UTC time exported in format yyyy-MM-dd hh:mm:ss Z e.g. 2008-03-09 16:05:07Z

Value separator

The values are separated as written in the format string.

```
[PointId], [FeatureCode], [Northing:Meter:3], [Easting:Meter:3]
7,3,5807299.068,32529273.978
```

If you prefer for example “;” you just have to replace the “,”

```
[PointId]; [FeatureCode]; [Northing:Meter:3]; [Easting:Meter:3]
7;3;5807299.068;32529273.978
```

Note: The decimal separator is set to “.”. E.g. in Excel you can use the Data tab, then Get Data > From File to import your csv file and adjust the separator if needed.

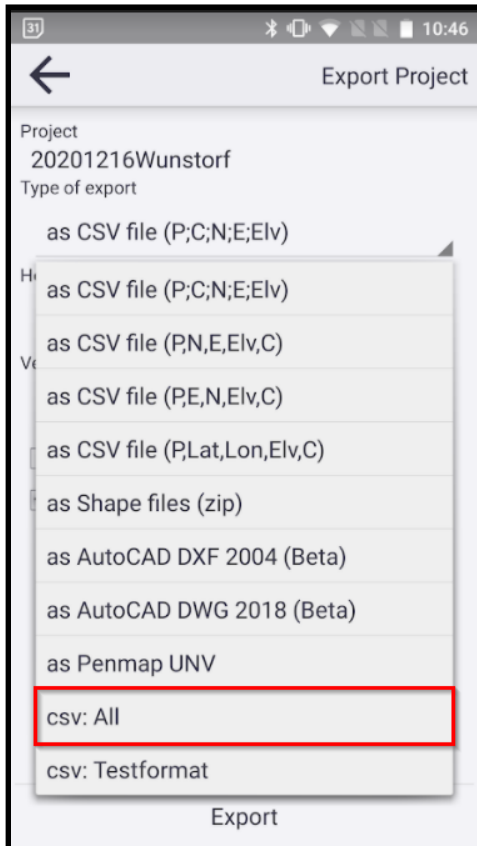
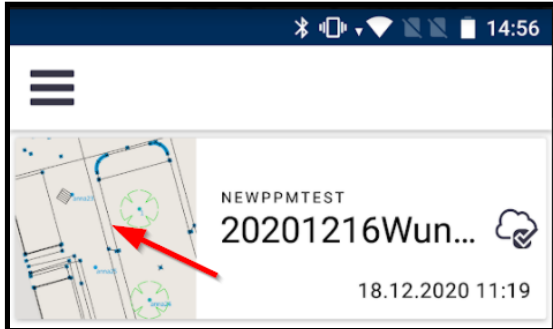
Parameter explanation for special values

PointId	Point Number	
FeatureCode	Code stored to the point e.g. from iFeature	
SatQuality	quality of the GNSS measurement	<ul style="list-style-type: none"> ● Unknown ● Uncorrected ● Differential ● Float ● Fixed ● RTKCode ● WAAS ● PPS ● Estimated ● Invalid ● RTX ● RTXCode ● XFill ● XFillRTX
CorrectionMode	received type of correction data	<ul style="list-style-type: none"> ● Uncorrected ● Ntrip ● Radio ● GsmVrs ● SBAS ● RTX
PointType	type of point generation	<ul style="list-style-type: none"> ● FreePoint ● BilaterationPoint ● ChainAndOffsetPoint ● ExtendPoint ● IntersectionPoint ● NormalPoint ● ParallelPoint ● BearingPoint ● GPSPoint ● VerifyPoint ● VerifyGPSPoint ● sparepoint2 ● constructpoint

Export csv via Penmap for Android (version 11 and higher)

The export of user defined csv-formats via Penmap for Android will be supported up from **Penmap for Android version 11**.

If the project is completed and uploaded the export can be started via detail card (tab & hold to the project or click to the map)



The definition needs to be done in Penmap Project Manager.

Contact

For more information or questions contact the Trimble Penmap community.

<https://community.trimble.com/groups/penmap-for-andriod>

<https://geospatial.trimble.com>

www.trimble.com