

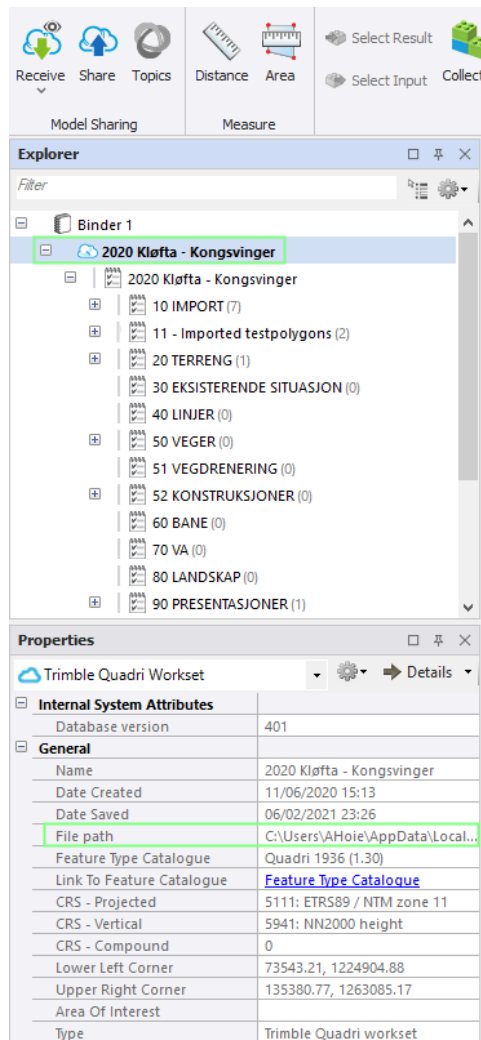
MOVE A QUADRI PROJECT FROM ONE SERVER TO ANOTHER

Sometimes it is necessary to move a Quadri project to a different server. This is a description on how to move a project from one model on a server to a new model on a different server.

Preparations

1. Open the old model on the old server, and stop working on this workset.
2. Make sure all work in the project is shared to the server.
3. Make sure all locks in the project are released.
4. Designate a user to be in charge of moving the project.
5. The person in charge of moving the project can now click on the Properties of the project and make a note of the path to the local workset on your PC.

Example: This is an old project from 2020, on an old server.



The file path in this example is

C:\Users\AHoie\AppData\Local\qg4\2DDD5693F8054E41B138B905214105\Job\7\2020 Kløfta - Kongsvinger\2020 Kløfta - Kongsvinger.QuadriModel

This means the Quadri model file **2020 Kløfta - Kongsvinger.QuadriModel** is saved in the local folder

C:\Users\AHoie\AppData\Local\qg4\2DDD5693F8054E41B138B905214105\Job\7\2020 Kløfta – Kongsvinger

This is the file we need, to continue working on the new server.

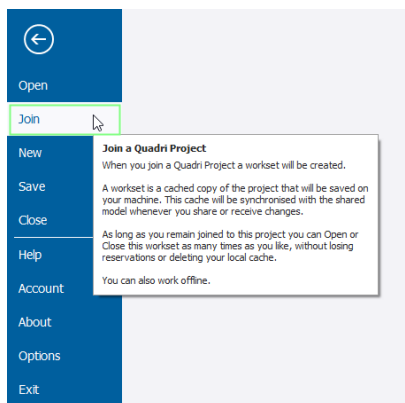
> Anders Hoie > AppData > Local > Qg4 > 2DDD5693F8054E41B138B905214105 > Job > 7 > 2020 Kløfta - Kongsvinger				
Name	Date modified	Type	Size	
{0ae00ceb-930f-4d4e-9a9f-7163625d4628}	06.02.2021 23:12	File folder		
{1fd378c6-1d84-40a1-bbbf-b79f8b29fcb0}	06.02.2021 23:12	File folder		
{3d78523c-c78c-4829-b8ce-eae52d96a4ea}	06.02.2021 23:12	File folder		
{021de140-ddb1-44a8-9c86-d9aa77a9f0e5}	06.02.2021 23:12	File folder		
{4318217f-e4cf-457e-b38b-0a10477ea7ff}	06.02.2021 23:12	File folder		
2020 Kløfta - Kongsvinger.GDD	06.02.2021 23:41	GDD File	47 708 KB	
2020 Kløfta - Kongsvinger.GDH	06.02.2021 23:41	GDH File	471 KB	
2020 Kløfta - Kongsvinger.GDI	06.02.2021 23:41	GDI File	1 KB	
2020 Kløfta - Kongsvinger.GDN	06.02.2021 23:13	GDN File	997 KB	
2020 Kløfta - Kongsvinger.GDTasks	06.02.2021 23:26	GDTASKS File	51 KB	
2020 Kløfta - Kongsvinger.NpAcad.user	19.08.2020 09:41	USER File	1 KB	
2020 Kløfta - Kongsvinger.QuadriModel	06.02.2021 23:26	QUADRIModel File	1 KB	
2020 Kløfta - Kongsvinger.Server.xml	06.02.2021 23:26	XML Document	2 KB	
2020 Kløfta - Kongsvinger.zQuadriModelBackup	06.02.2021 23:26	ZQUADRIModelB...	49 418 KB	

Create a new model on a new server

1. Create a new model in Quadri Model Manager (QMM) with the same CRS as the old model. Please remember to add the users. You also have to make sure to use the same Feature Catalogue as the old model. To save time, you can copy the Area of interest from the old model to the new. See this QMM video for details.

[Model Manager in Quadri \(vidyard.com\)](https://vidyard.com)

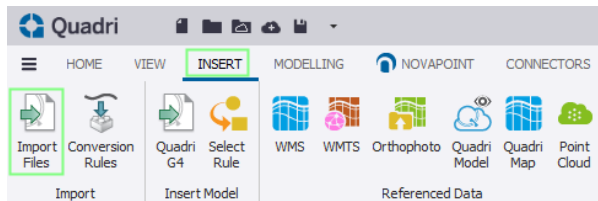
2. The person in charge of moving the project can now Join the new project in Quadri



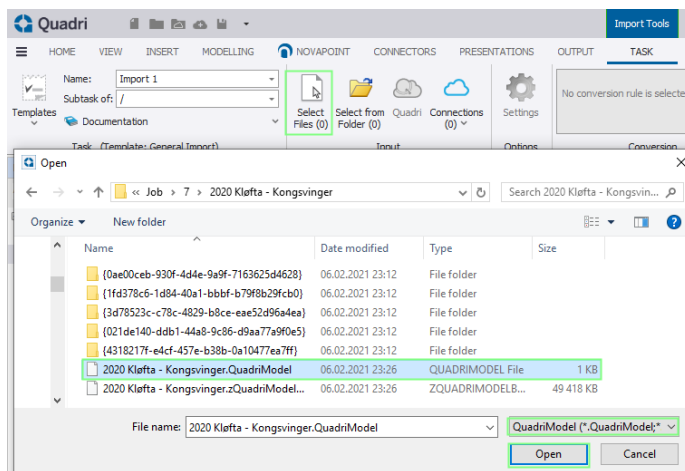
3. This is now a new model with the correct CRS and the correct users on the correct new server. The model is empty, and we need to import the old QuadriModel file to continue the work.

Import the QuadriModel file

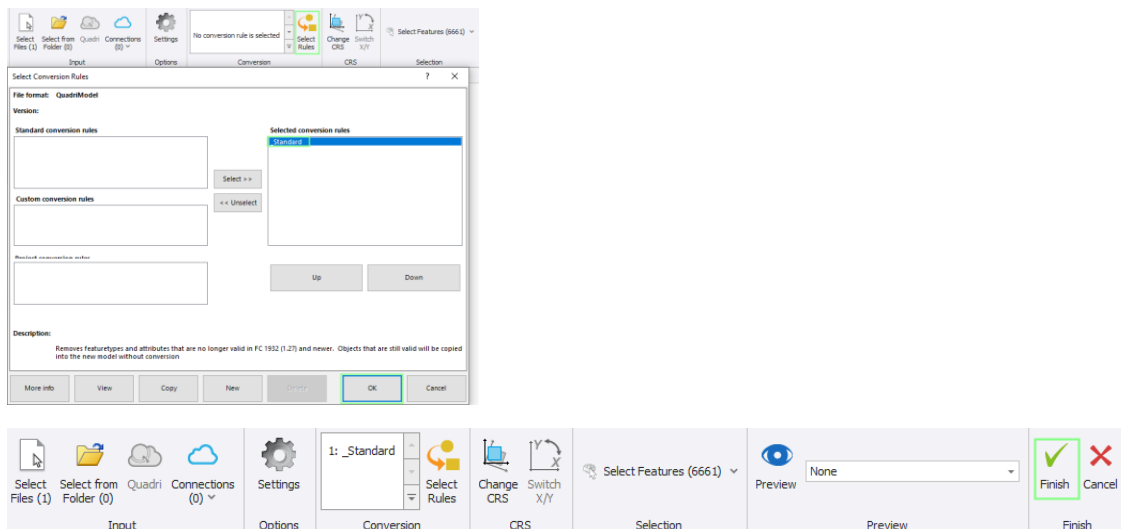
1. The person in charge of moving the project can now open the new empty model. Click Insert and Import Files.



2. Select the old QuadriModel



3. Select the Standard conversion rule, press OK, and Finish

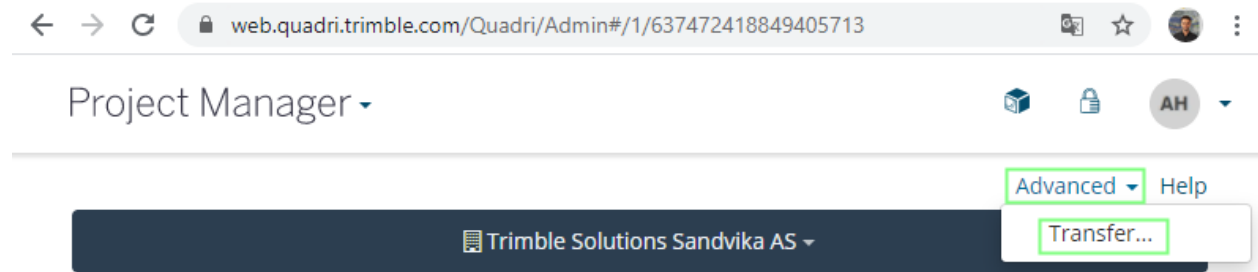


4. If you are asked about "Loose features" answer "Yes" and after reading the file, go to "Selection" and "Tasks", select all, **except** the "Loose features" task(s).

5. If you want to move the Topics as well, please log in to <https://web.quadri.trimble.com/Quadri/Admin>

This must be done by the person who has administrator rights. Regular users will not have access to this page.

Select **Advanced** and **Transfer...**



Make sure you select the original Old project, and pick destination New project.

Pick original Project ▼ → Pick destination Project ▼

All existing topics and presentations will be transferred to the destination (new) project.

The destination project should not have any topics or presentations. If so, delete them first.

The original (deprecated) project will be deleted from Quadri after this operation.

6. After everything is transferred, we recommend disconnecting the old workset and then making the model unavailable in Quadri Model Manager.

7. The person in charge of moving the project can Share his changes, and everybody else can now Join the project, Receive the changes and continue working on the New server.