



# Release Notes

CIVIL DESIGN AND ENGINEERING

March 2023

## Quantm 2023.2

---

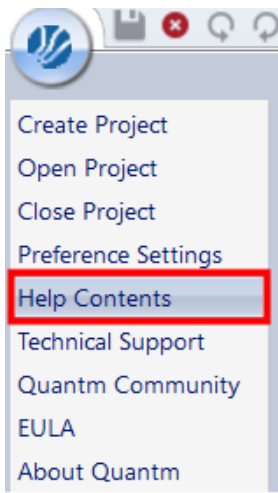
|  |    |
|--|----|
| New and improved features                                  | 2  |
| New Help system  | 2  |
| Contours (height curves) saved in the scenario             | 2  |
| 250 km version able to choose manual or local optimization | 3  |
| Add a cost unit for CO2                                    | 4  |
| Crossing rule for structures                               | 5  |
| Possible to turn off structure(s)                          | 6  |
| Fixed  | 7  |
| Scaling issue for Crossing rule for features/zones         | 7  |
| Crossing Clearances Rules for Culvert                      | 8  |
| Import reference alignment                                 | 9  |
| Change name: Catalog --> Template                          | 10 |
| Reaching Sales, Support, and the Community                 | 11 |



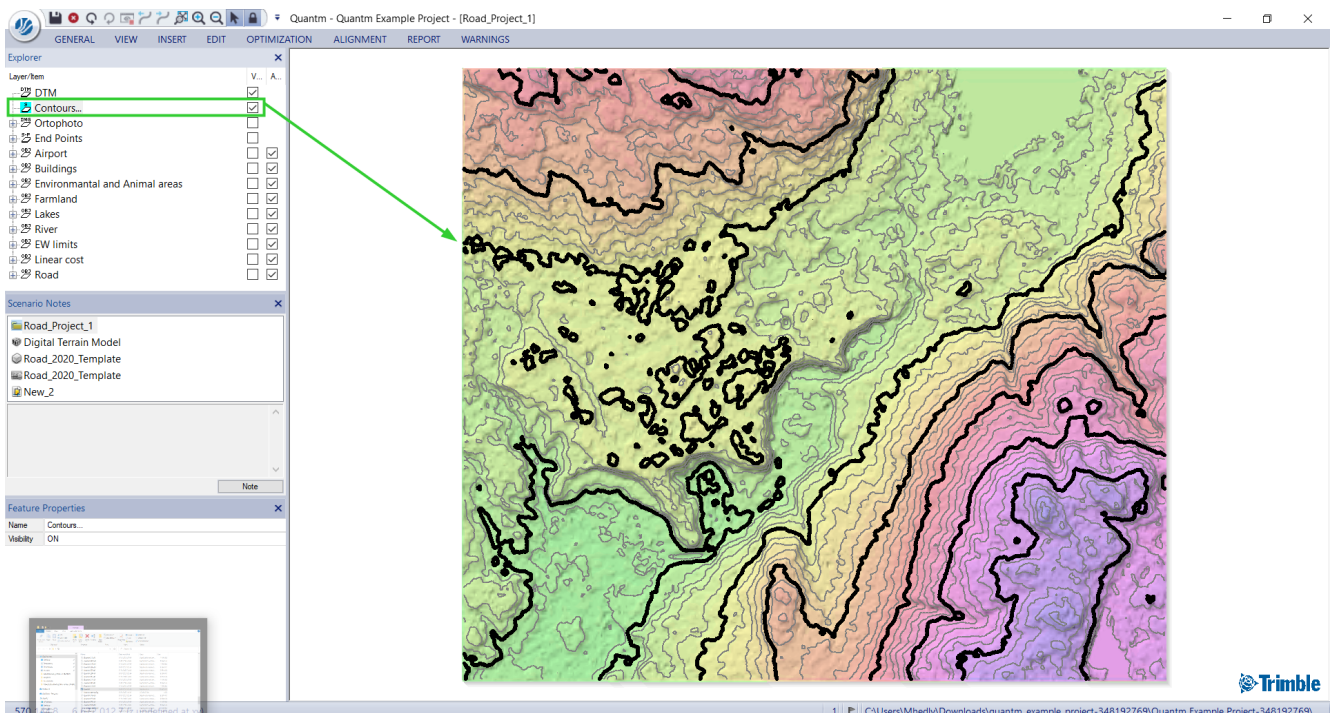
# New and improved features

## New Help system

A new Quantm help page can be found [here](#). Or navigate directly from Quantm.



## Contours (height curves) saved in the scenario



## 250 km version able to choose manual or local optimization

Users with the 250 km version of Quantm can now choose to run optimizations as before on the server or use the local machine. The server will of course be a lot faster than using the local CPU's for long optimizations.

**Corridor Identification**

Optimization Type

☒ Free to Roam ☐ Geometric

☐ Quick Seed ☐ Corvilinear

☐ Corridor  Corridor Width (m)

Name

Job name:

Number of Alignments  (25)

Description

Free to Roam Optimization – Produces a sample of alignments exploring the available land surface

Notes:

Submit by:

Local Processor

Manual

# Add a cost unit for CO2

Cost Parameters

Global

Material

Geology

Fill

Template Materials

Bridge

Tunnel

Wall

Culvert

Area

Linear

Fixed

Earth movement cost

|        |       |         |      |           |
|--------|-------|---------|------|-----------|
| Haul   | 8,50  | €/m³/km | 1,00 | CO2/m³/km |
| Dump   | 8,50  | €/m³    | 3,00 | CO2/m³    |
| Borrow | 10,00 | €/m³    | 3,00 | CO2/m³    |

CO2

40

€/tonne

OK

Cancel

# Crossing rule for structures

It is possible to cross a zone or a feature with a structure over or under. You can apply two different crossing types depending if you cross over or under.

Crossing type

Name

New road

Width (m)

10

Layer

Road

Earth moving

No effect

Usable (m3)

0

Unusable (m3)

0

Reference altitude

Natural surface

Clearance (m)

< -5.00 or > 5.00

...

Crossing type

Structure (feature)

No. of cells

1

Bridge type

Unspecified

Bridge over Road and Rail

Bridge over Water

Bridge over Land

New...

Underpass type

Unspecified

Bridge over Road and Rail

Bridge over Water

Bridge over Land

New...

OK

Cancel

# Possible to turn off structure(s)

In preference setting you can turn off structures; bridges, tunnels and retaining walls.

Preference Settings

General

Alignment

Zone

Feature

Warnings

CSV Export

Display width factor

8

V:H Ratio

5:1

Cross Section Interval Setting

20,0

(m)

Volume Report section interval

200

(m)

Accuracy for duplication

1,0

%

Alignment Cost Settings

☒ Alignment cost

☒ Alignment %

☒ Fixed cost

☐ Cost as % savings only

☒ Automatically re-cost on edit

☒ Display CO2

☐ Display Noise

☒ Cost CO2 Traffic

☐ Cadastral Clip Footprint

Height Defined Structures

☒ No Height Defined Bridges

☒ No Height Defined Tunnels

☒ No Height Defined Walls

Rounding of Radii

☐ Radius H (m)

☒ 10

☐ 100

☐ 1000

☐ Radius V (m)

☐ 10

☒ 100

☐ 1000

OK

Cancel



## Fixed

### Scaling issue for Crossing rule for features/zones

The scaling of the bridge type windows has correct scaling and it's possible to view the entire name of the bridge type

**Road Feature** [X]

| Name     | Width (m) | Layer |
|----------|-----------|-------|
| New road | 10        | Road  |

Earth moving: No effect (v) Usable (m3): 0 Unusable (m3): 0

Reference altitude: Natural surface (v) Clearance (m): < -4.00 ...

Crossing type: Underpass (v) No. of cells: 1

| Bridge type               |
|---------------------------|
| Unspecified               |
| Bridge over Road and Rail |
| Bridge over Water         |
| Bridge over Land          |
| New...                    |

OK Cancel

# Crossing Clearances Rules for Culvert

It's now possible to apply a culver crossing clearance.

Road Feature

Name

New road

Width (m)

10

Layer

Road

Earth moving

No effect

Usable (m3)

0

Unusable (m3)

0

Reference altitude

Natural surface

Clearance (m)

< -4.00

Crossing type

Underpass

No. of cells

1

Bridge type

Unspecified

Bridge over Road and Rail

Bridge over Water

Bridge over Land

New...

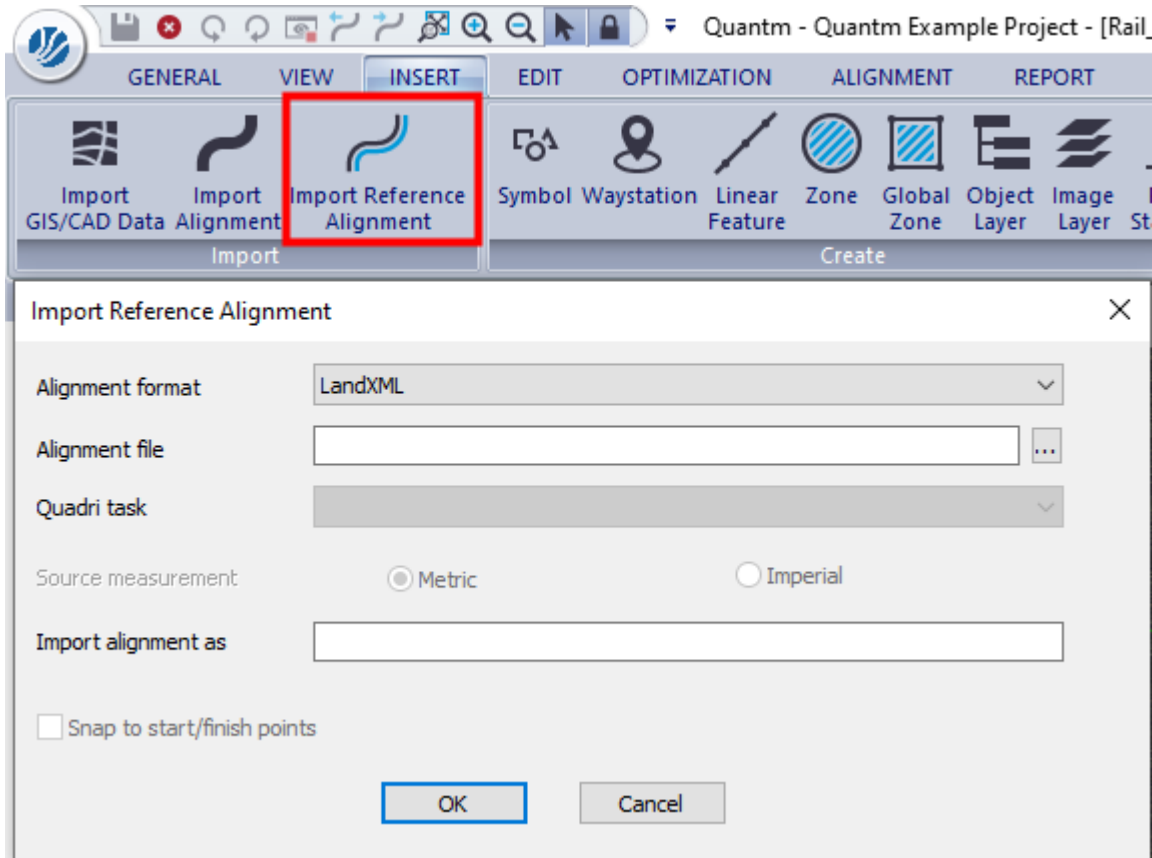
OK

Cancel



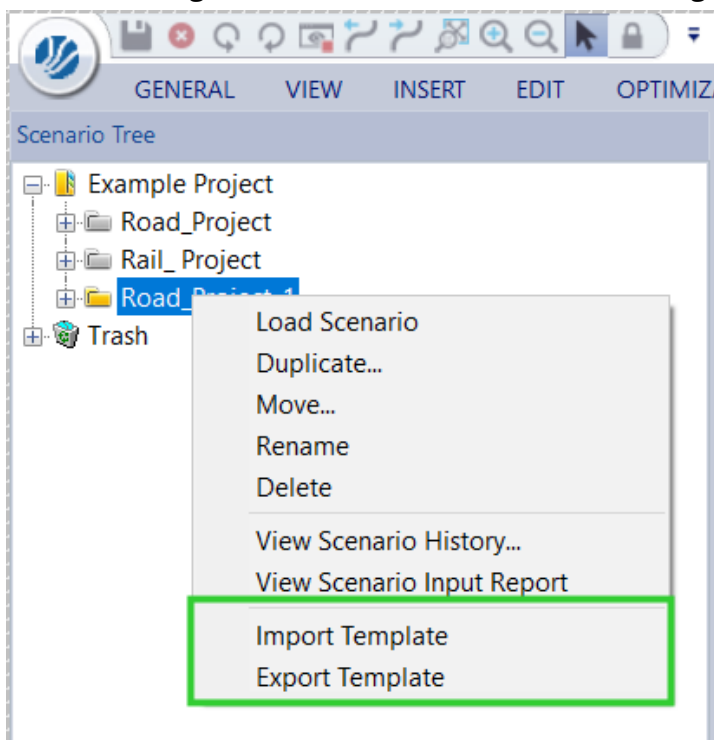
## Import reference alignment

Is now working with the new version 2023.2 and you can now import or receive alignments with the existing cross section, tunnels and bridges.



## Change name: Catalog --> Template

For terminologic reasons, the former name "catalog" is change name to "template"



# Reaching Sales, Support, and the Community

For more information, please use these resources:

## Quantm Resource Center

Search for release notes, installation guide, license activation guide, learning guides, and technical articles, and more in the [Quantm Resource Center](#)!

## Quantm Support email

Visit [civil.support@trimble.com](mailto:civil.support@trimble.com).

## Trimble Connected Construction

Read more about how Trimble construction software solutions connect each lifecycle phase of your civil construction projects [here](#).

