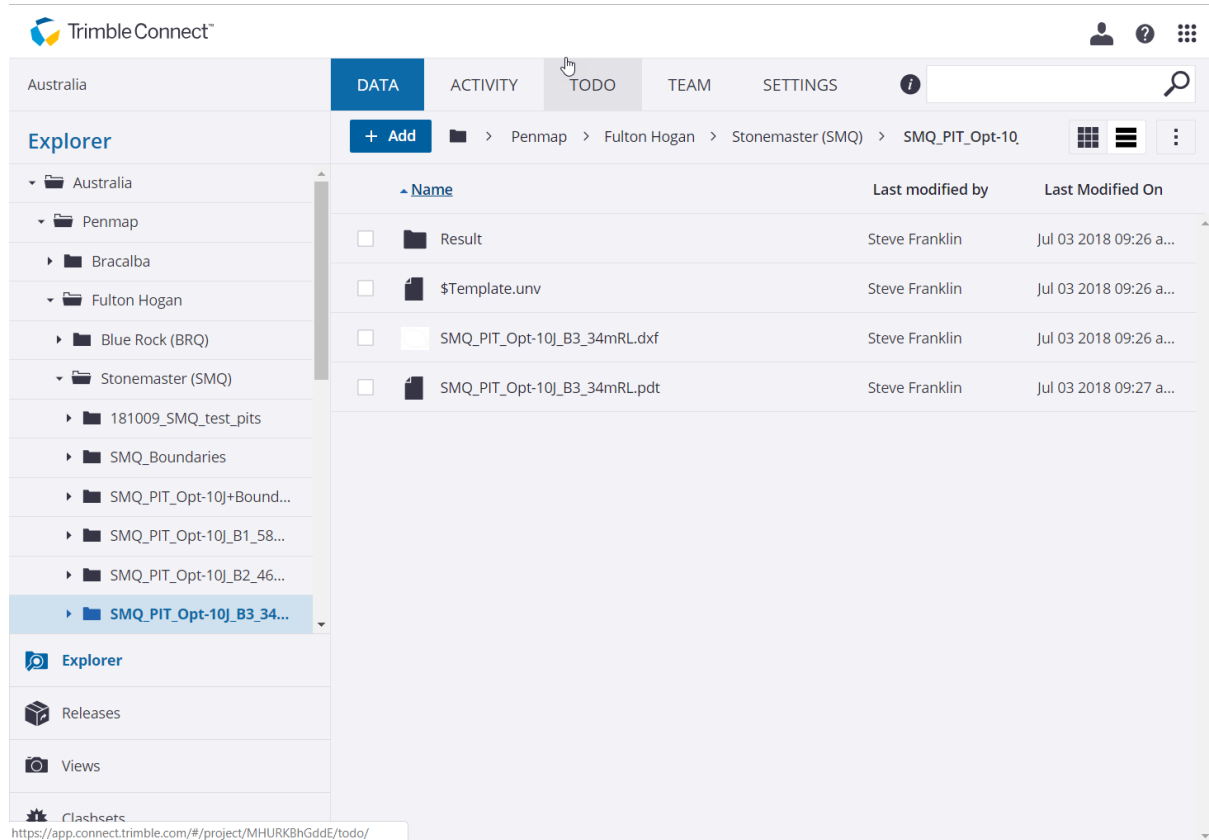


## Memo

|     |   |       |                |
|-----|---|-------|----------------|
| To: | Cornelia Schmitz  | Date: | 11 Nov 2018    |
| CC: | Johan Smet  | From: | Steve Franklin |
| RE: | Why is the handling of line color in Trimble Penmap for Android inconsistent? |       |                |

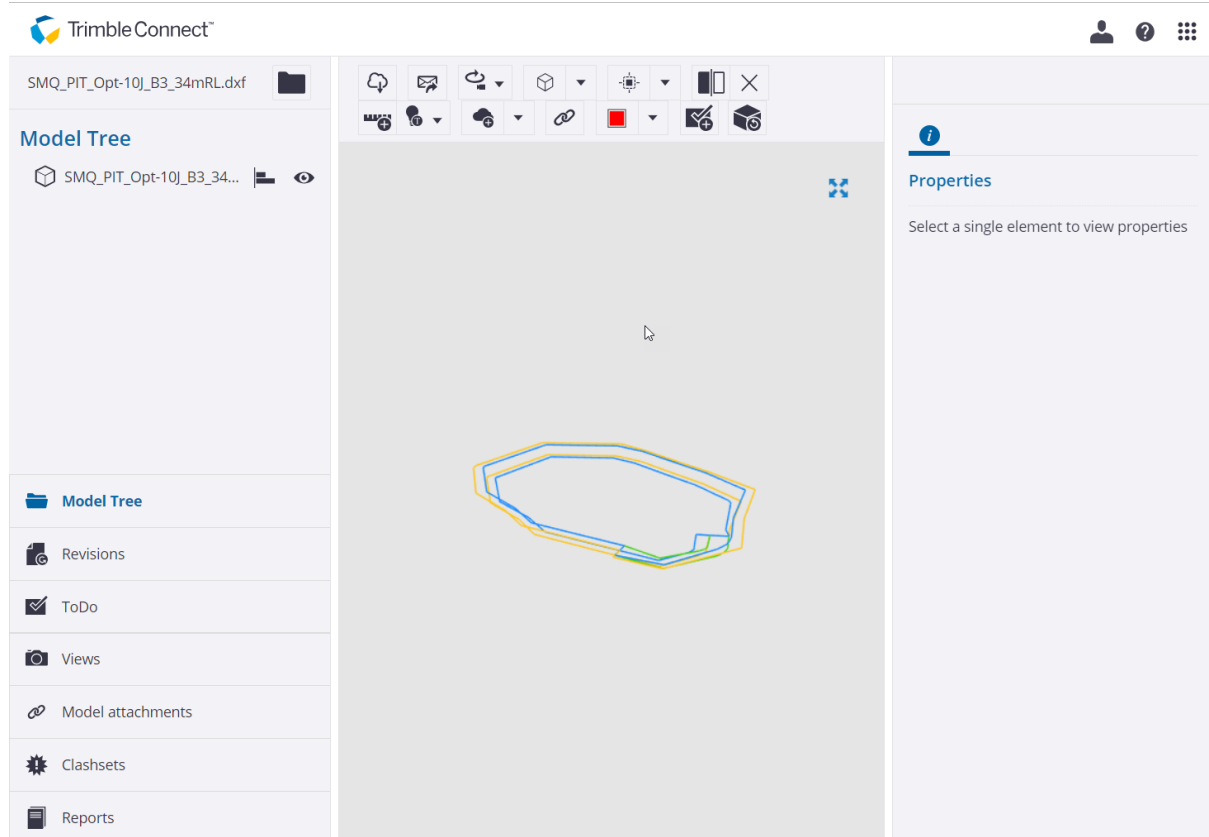
The Trimble PenMap for Android software in conjunction with Catalyst is great, however we are consistently having trouble with some projects retaining their line coloring and others not, creating significant confusion for users.

The file was created in our mine design software, colored by line type eg toe and crest. Exported as a .dxf and used to create a Penmap Project you can see it here in Trimble Connect.

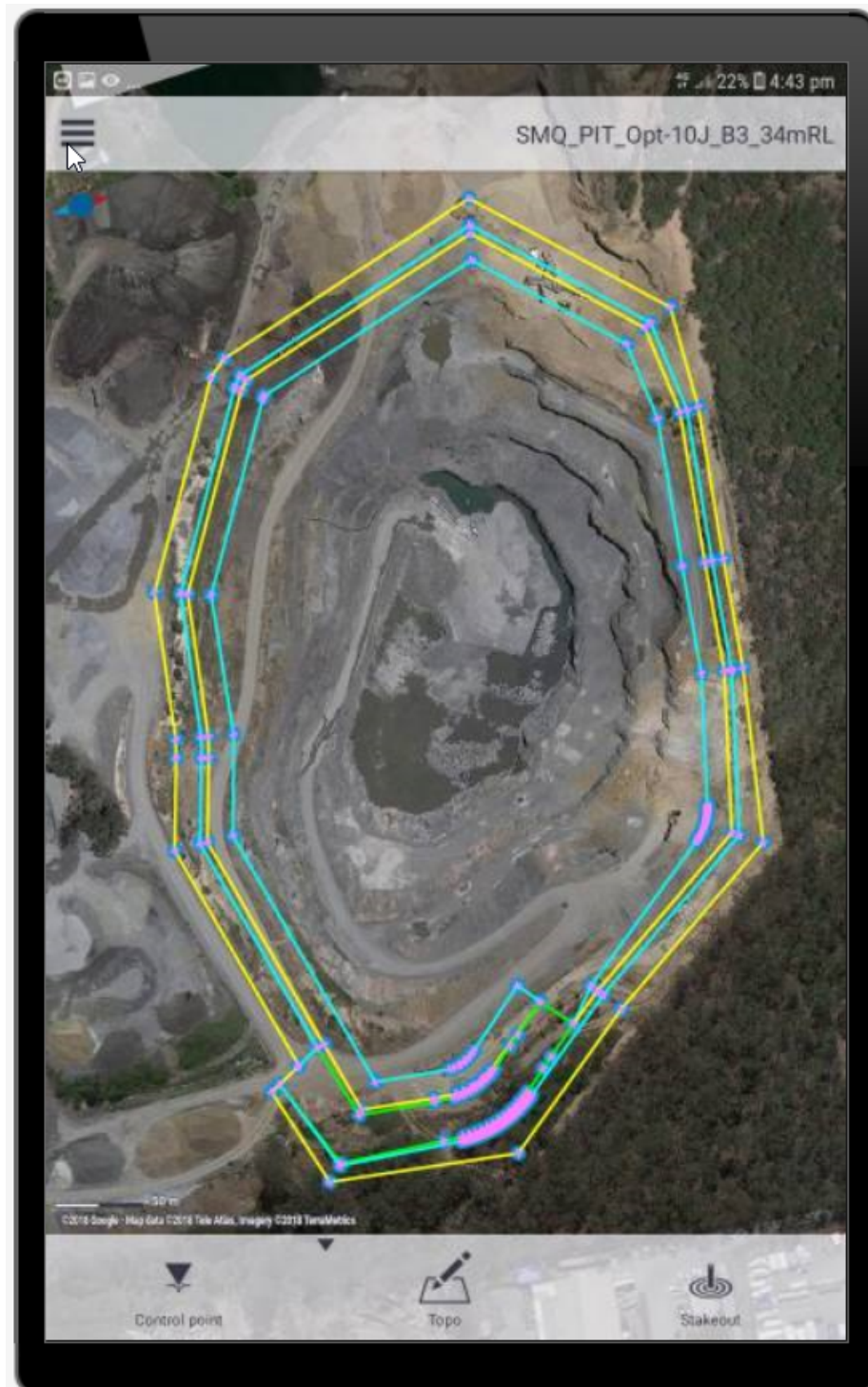


The screenshot shows the Trimble Connect web application interface. The top navigation bar includes tabs for DATA, ACTIVITY, TODO, TEAM, and SETTINGS. The left sidebar shows a hierarchical tree view of the project structure, with the 'Penmap' folder selected. The main content area displays a list of files and folders, including 'Result', '\$Template.unv', 'SMQ\_PIT\_Opt-10J\_B3\_34mRL.dxf', and 'SMQ\_PIT\_Opt-10J\_B3\_34mRL.pdt'. The interface is clean and professional, with a light blue and white color scheme.

When you look at the .dxf file in Trimble Connect you can see the lines are colored correctly.



On the device in Penmap for Android the lines are also colored in accordance with how the .dxf was formatted in our mine design software.



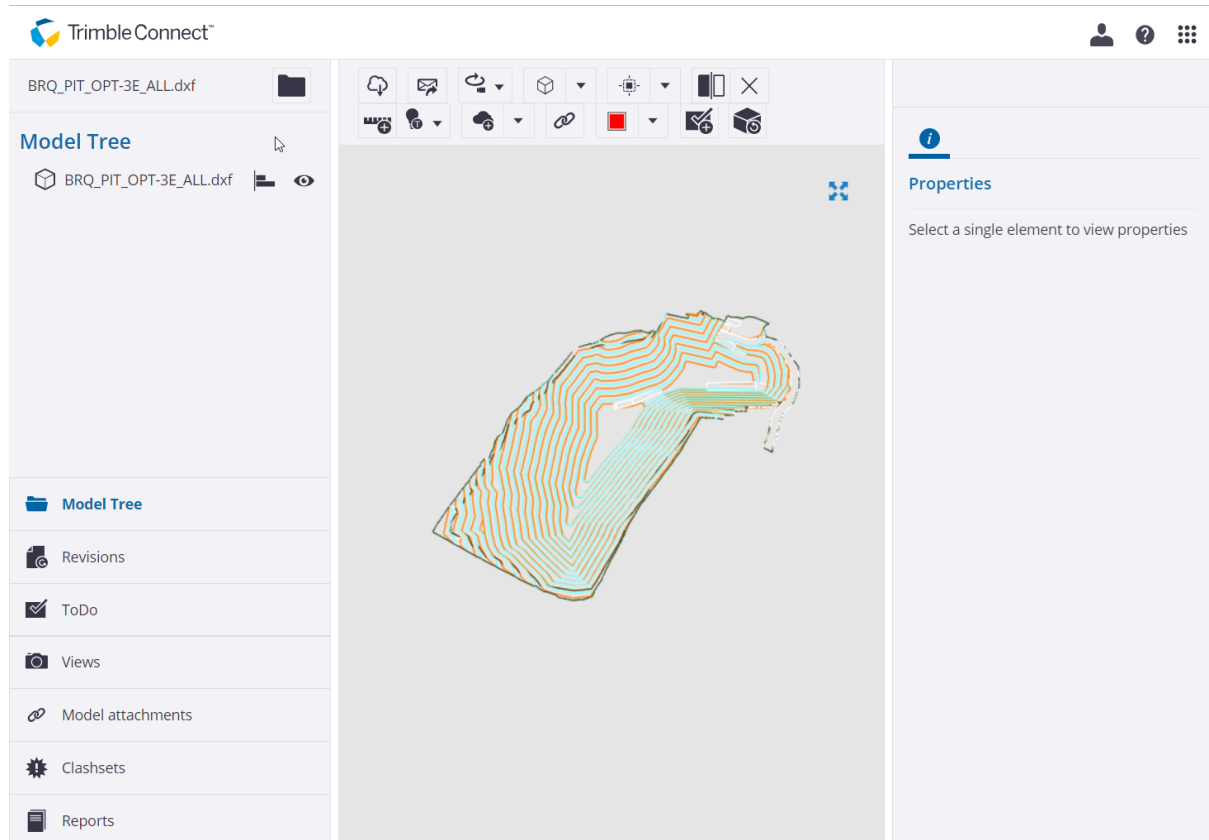
The files associated with this project are:

SMQ\_PIT\_Opt-10J\_B3\_34mRL.dxf

SMQ\_PIT\_Opt-10J\_B3\_34mRL.pdt

template.Quarry.txt.ptz

The following project was created using exactly the same methodology  
When you look at the .dxf in Trimble Connect you can see the lines are colored.



When you look at the display on the device for this project you see that all lines are black. This is very difficult from a user perspective - all lines look the same.



The files associated with this project are:

BRQ\_PIT\_OPT-3E\_ALL.dxf

BRQ\_PIT\_OPT-3E\_ALL.pdt

template.Quarry.txt.ptz

What I would like to know is how we can ensure that the line color seen in our design software and in Trimble Connect, reliably shows up in a Penmap for Android design on the device screen.