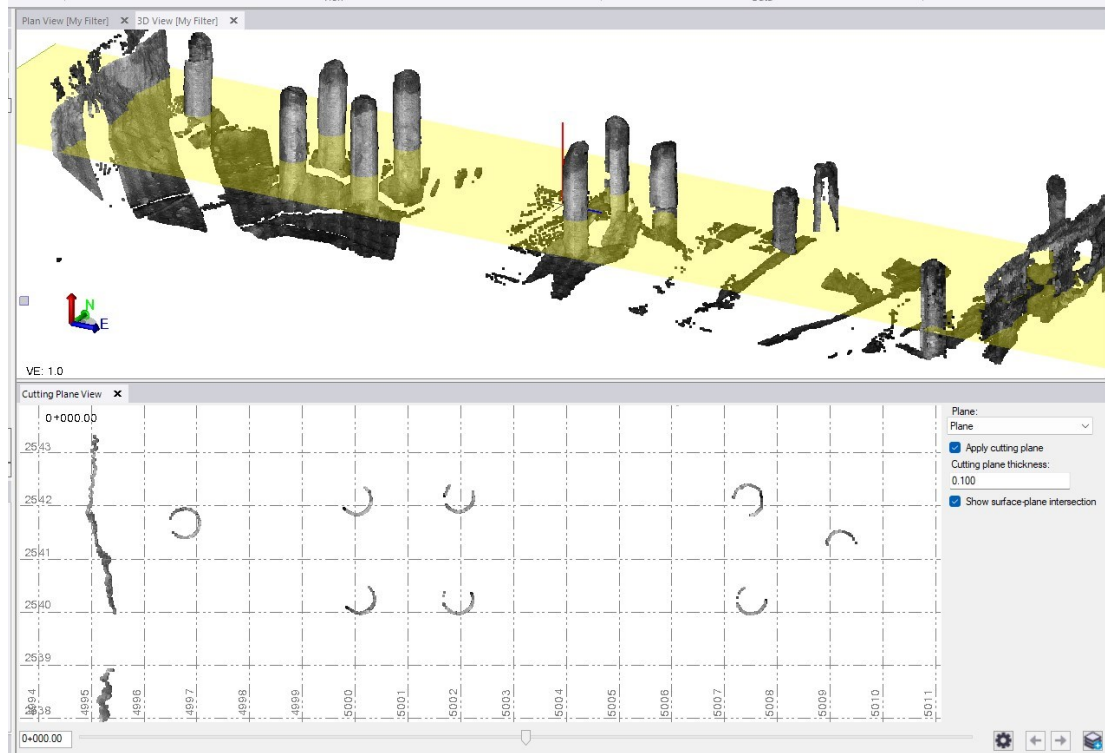
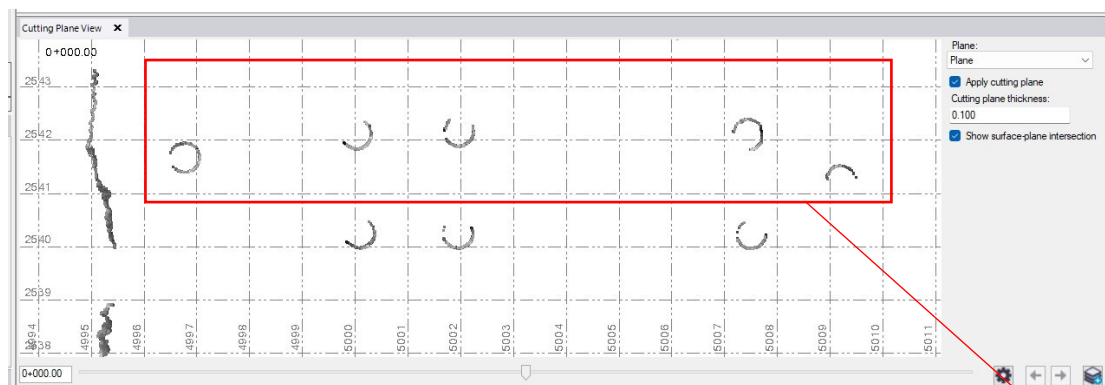


Step by step workflow

1. After pile scanning we got this:

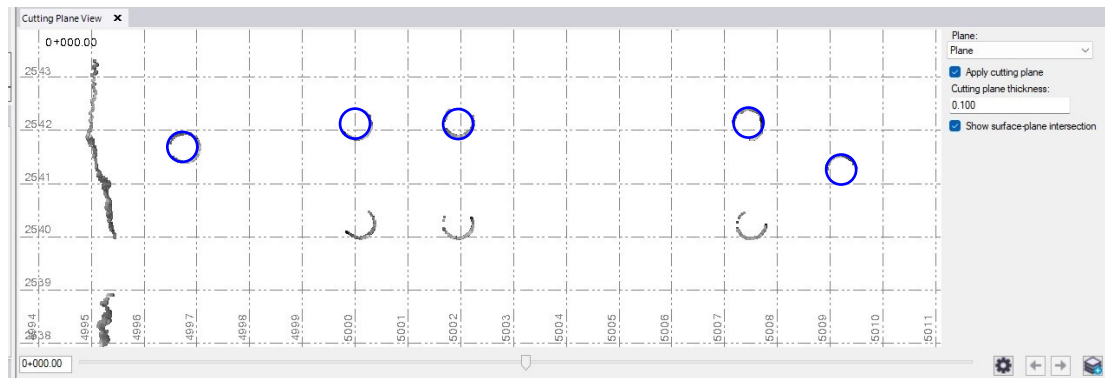


2. In Cutting plane view we would like to select all necessary scanned piles and with macro, we would like to create best-fit circles for all selected "piles".



Example selected area

3. Result



Final result:

After export of circles to ZWcad, we can get center points from circles. Similarly, we get center points from project drawings and thus we can compare as-build vs project.

