



Installation Guide

CIVIL DESIGN AND ENGINEERING

AUGUST 2022

Quantm Installation Guide

Downloads	2
Contacts	2
APAC (Asia)	2
South and North America	2
Europe, Middle East and Africa	2
Versions	2
Quantm	2
Quantm Viewer	2
Quantm Pathfinder	2
Installation	3
Installing Quantm/Quantm Viewer	3
Installing Pathfinder	8
Reaching Sales, Support, and the Community	15

Downloads

Contacts

Please contact your dealer or Trimble direct sales representative for a download link:

APAC (Asia)

bill_lazaris@trimble.com

South and North America

adrien_patane@trimble.com

Europe, Middle East and Africa

magnus_hedly@trimble.com

Versions

Quantm

Quantm is installed on the clients' desktops. This version has three different licenses based on the length of the project. With the 50km desktop license you can run local optimizations. With the 100km/250km license you have to run the optimizations on a server.

Quantm Viewer

Quantm Viewer is a free installation where you can view all projects.

Quantm Pathfinder

Pathfinder is installed on a computer/server with better performance and more CPU-cores than a standard computer to increase the speed and size of optimizations.

Installation

Installing Quantm/Quantm Viewer

Extract/unzip the downloaded file, and run the Setup.exe to start the installation.

Name	Date modified	Type	Size
AutoPlay	08.04.2021 12:53	File folder	
Install	08.04.2021 12:53	File folder	
lua5.1.dll	08.04.2021 12:53	Application extens...	319 KB
lua51.dll	08.04.2021 12:53	Application extens...	18 KB
Setup.exe	08.04.2021 12:53	Application	6 671 KB

Click Yes in the first dialog to begin.

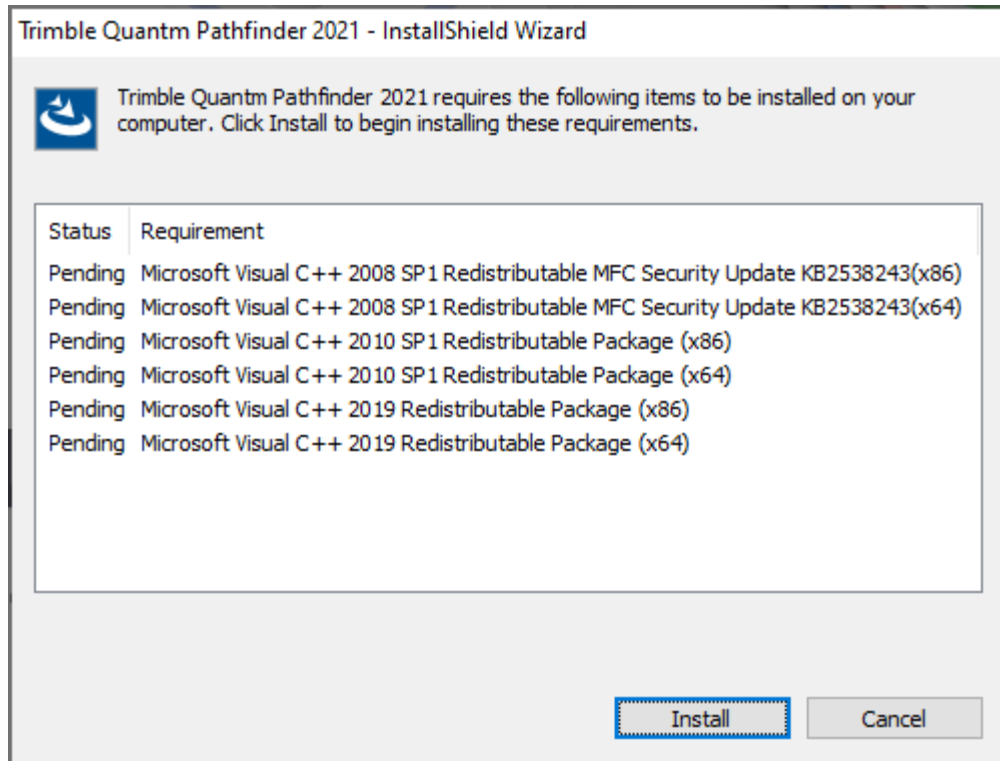


This splash screen appears.

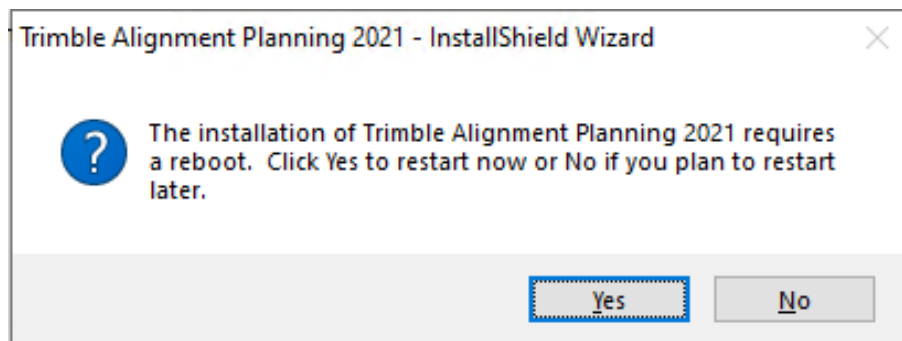


Click Install to continue.

You may see a dialog about installation requirements (how many items it shows depends on what you have installed already).

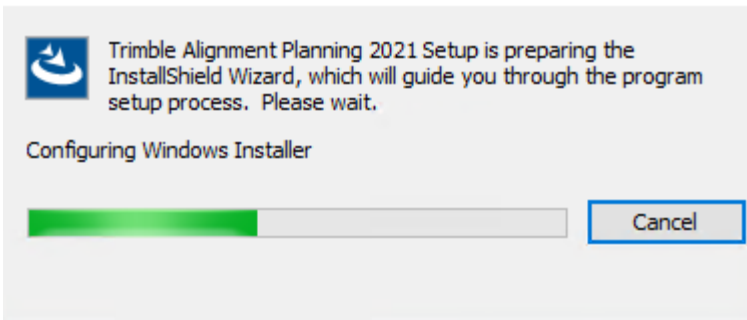


You may be required to restart your computer one or more times to install them.

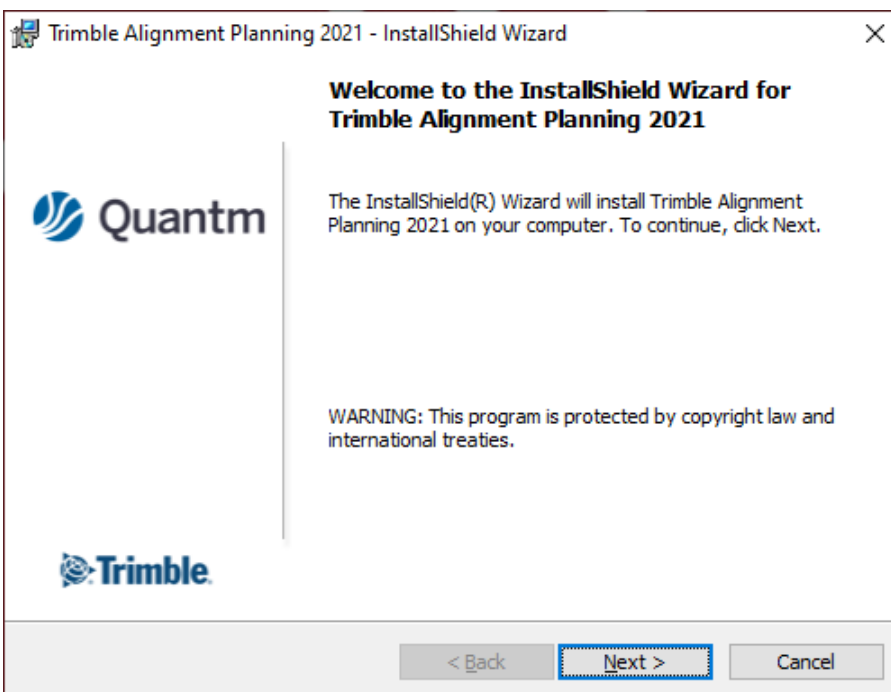


Once the prerequisites are installed, the Quantm installation proceeds.

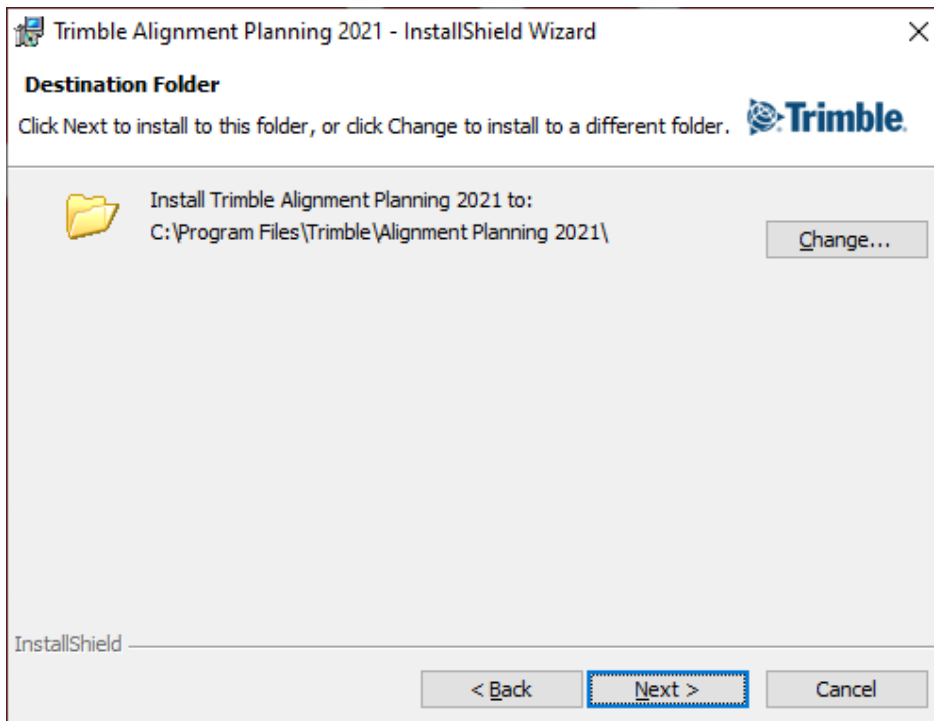
Trimble Alignment Planning 2021 - InstallShield Wizard



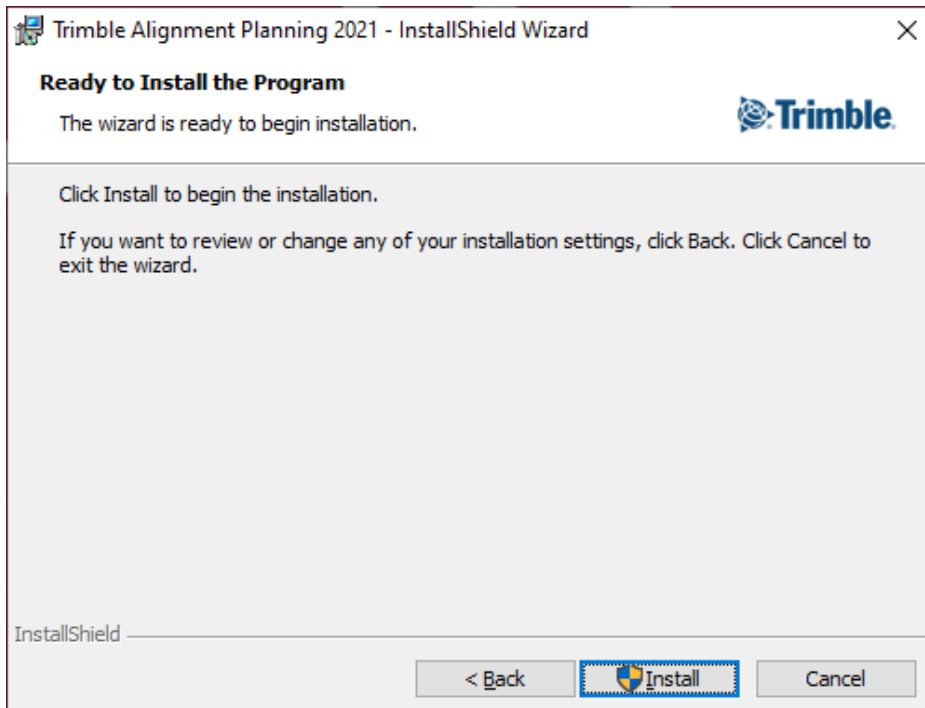
Click Next.



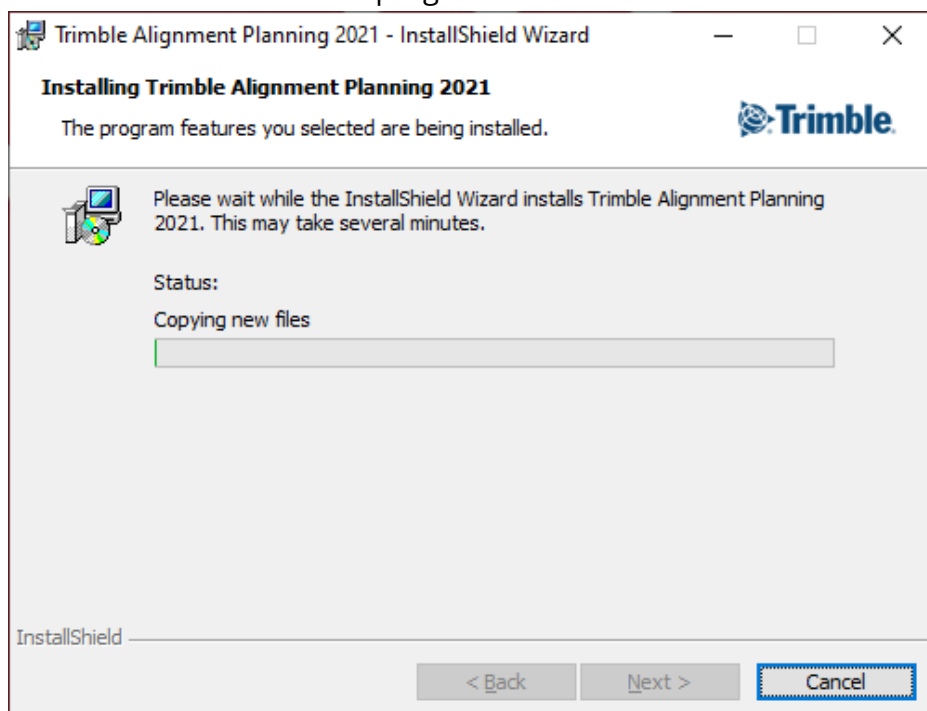
Click Change to specify where Quantm is installed, or just click Next to accept the default location. The downloads will not overwrite the old versions by default, it will install to its own new folder.



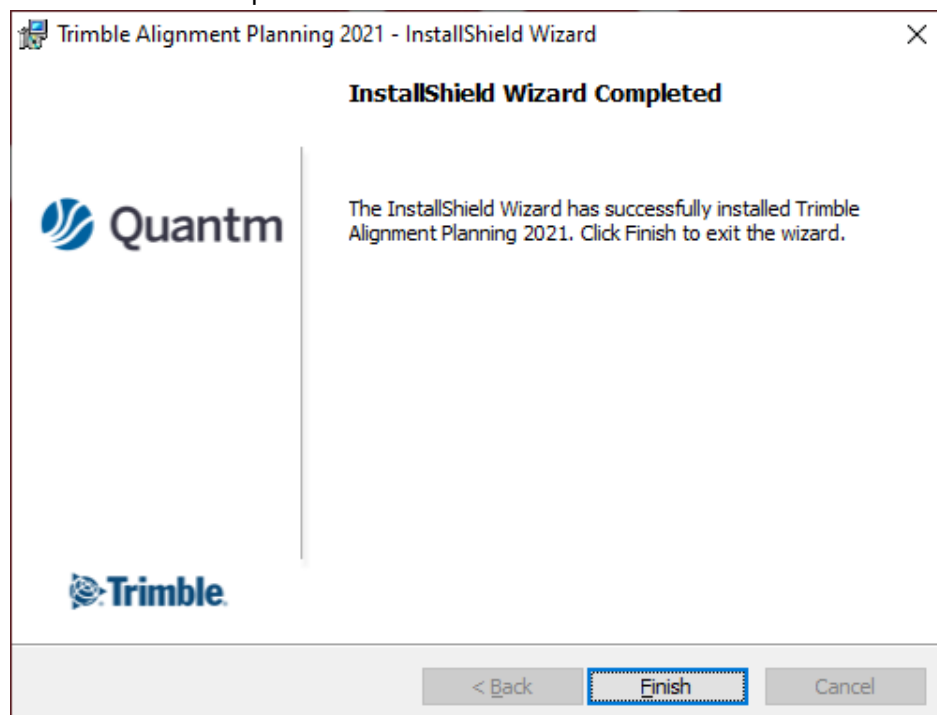
In the next dialog, click Install to begin the process.



The next screen shows the progress of the installation.



Click Finish to complete the installation.



Quantm/Quantm Viewer are installed. A shortcut will appear on your desktop.



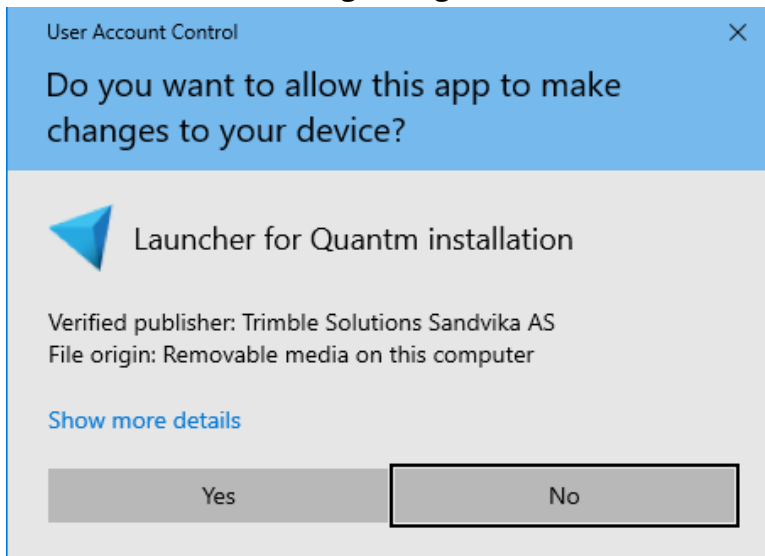
Installing Pathfinder

Before installing the Quantm Enterprise Pathfinder software, ensure that you have administrator privileges on your server.

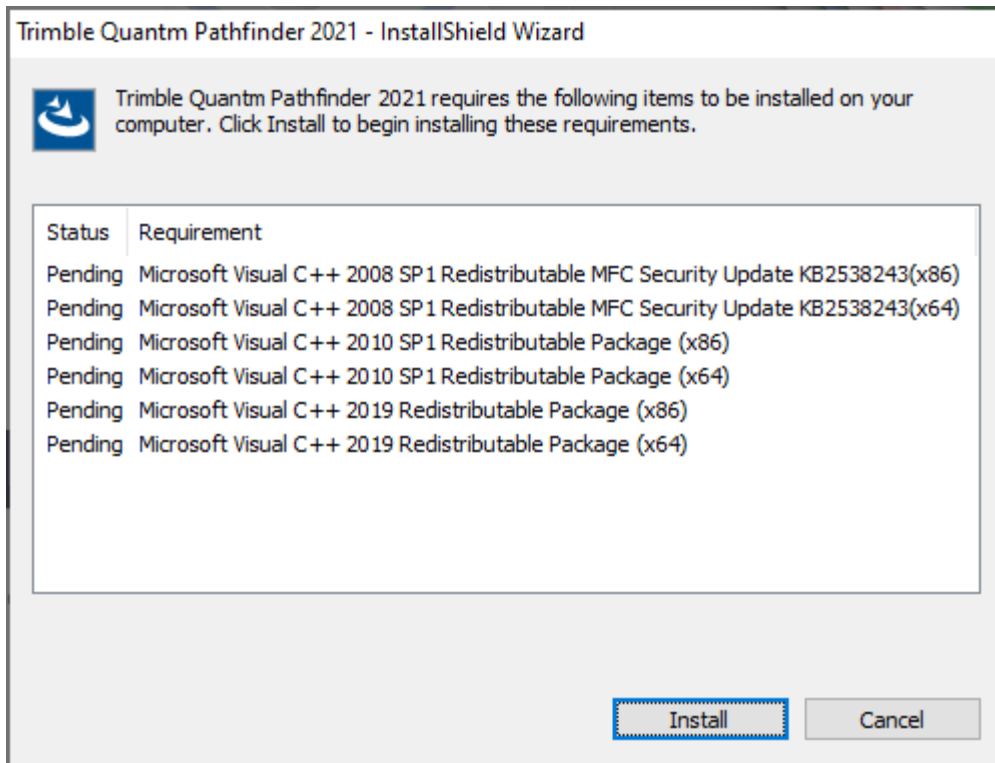
Extract/unzip the downloaded file, and run the Setup.exe to start the server installation.

AutoPlay	File folder			
Install	File folder			
lua5.1.dll	Application extension	173 KB	No	319 KB
Setup.exe	Application	3 254 KB	No	6 671 KB

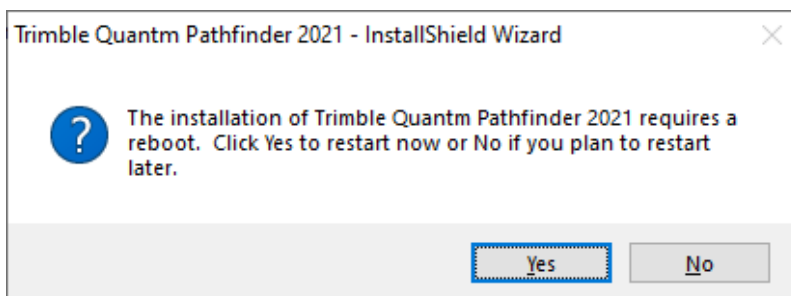
Click Yes in the first dialog to begin.



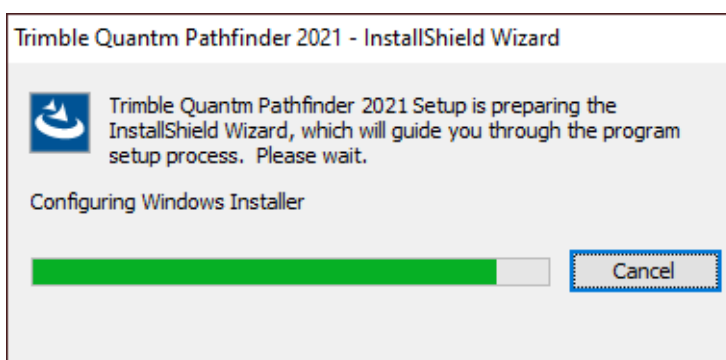
You may see a dialog about installation requirements (how many items it shows depends on what you have installed already).



You may be required to restart your computer one or more times to install them.



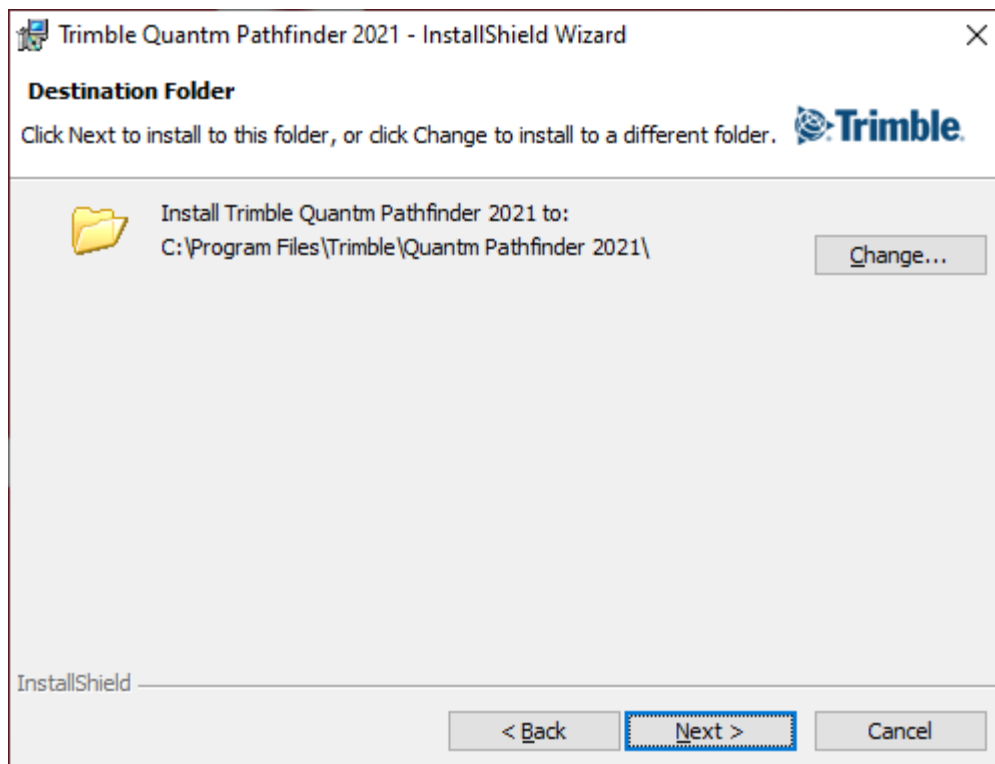
Once the prerequisites are installed, the Pathfinder installation proceeds.



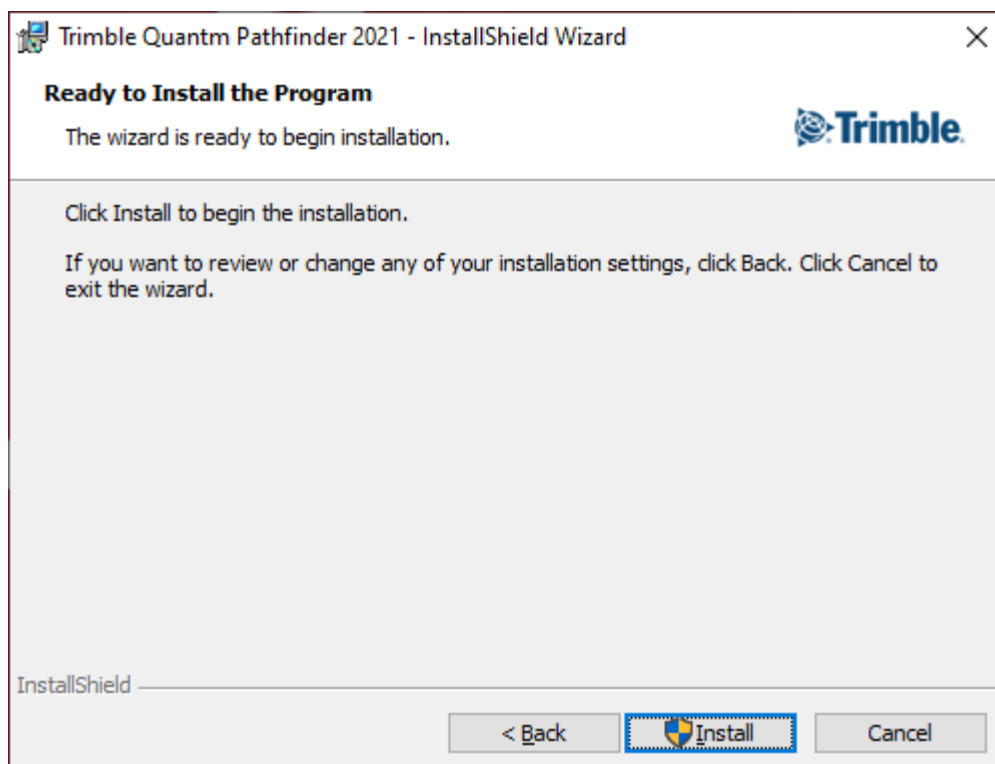
Click Next.



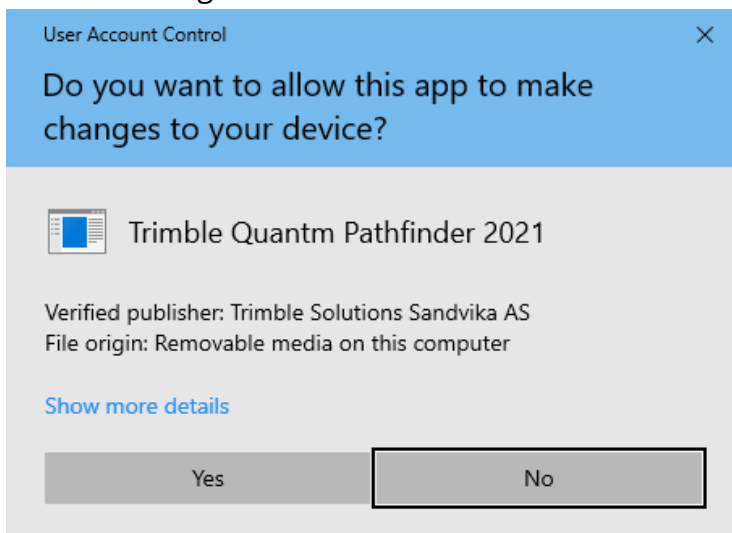
Click Change to specify where Pathfinder is installed, or not just click Next to accept the default location.



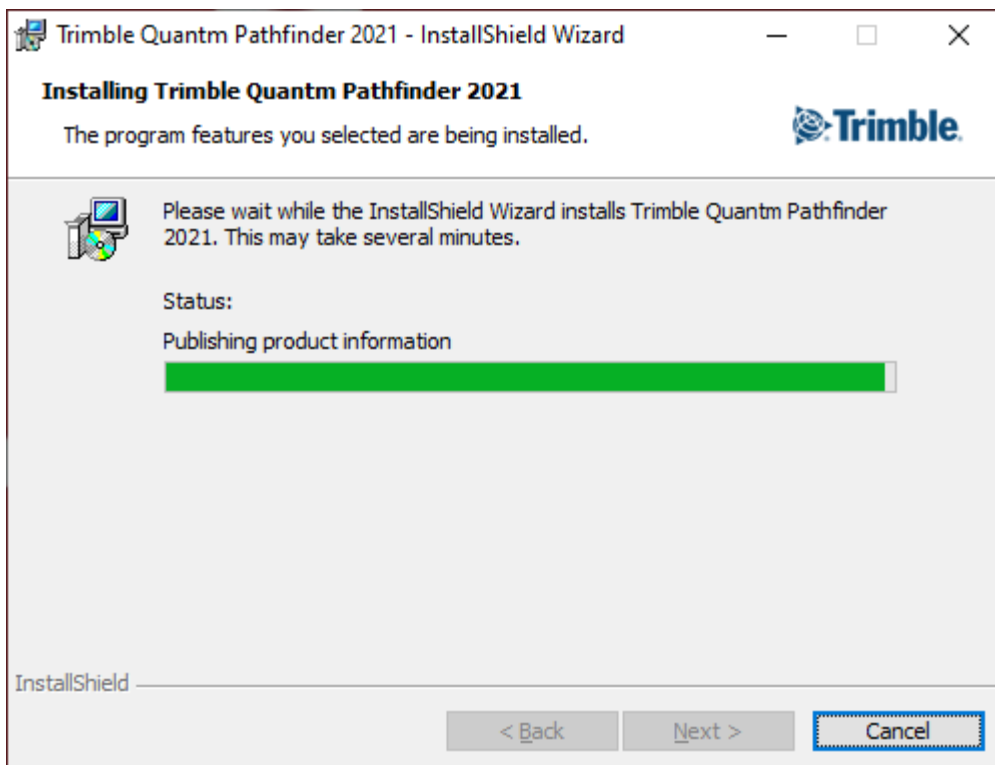
Click Install.



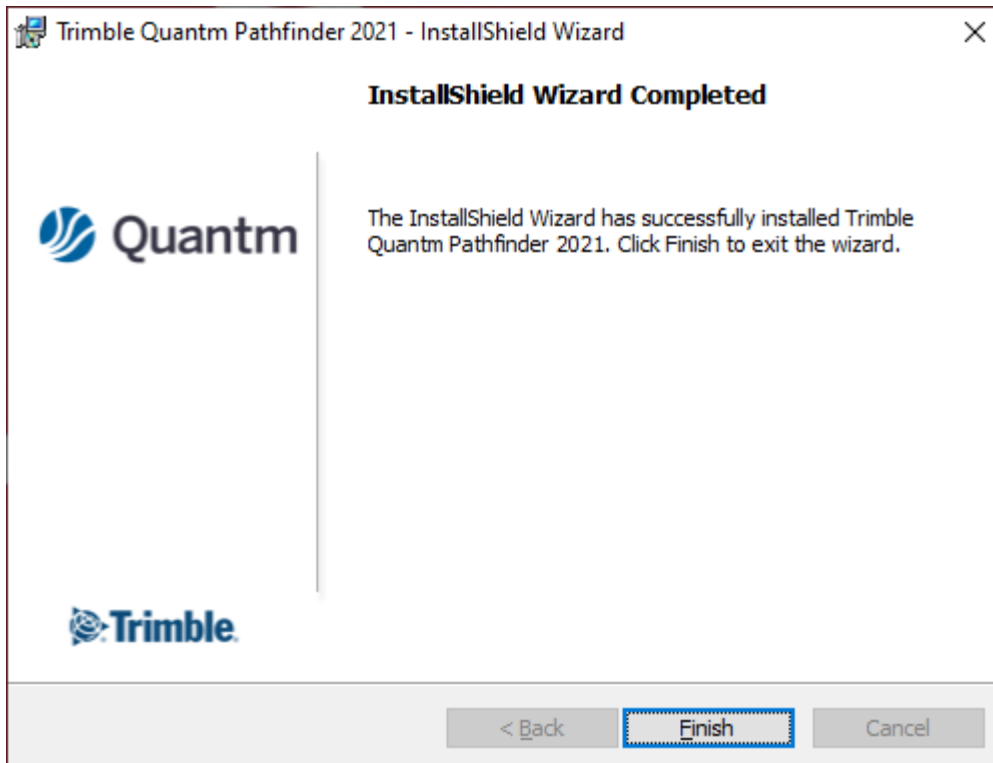
Click Yes to begin the installation.



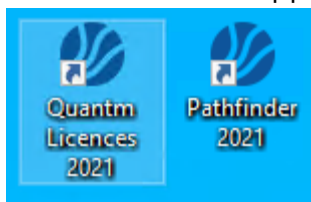
The next screen shows the progress of the installation.

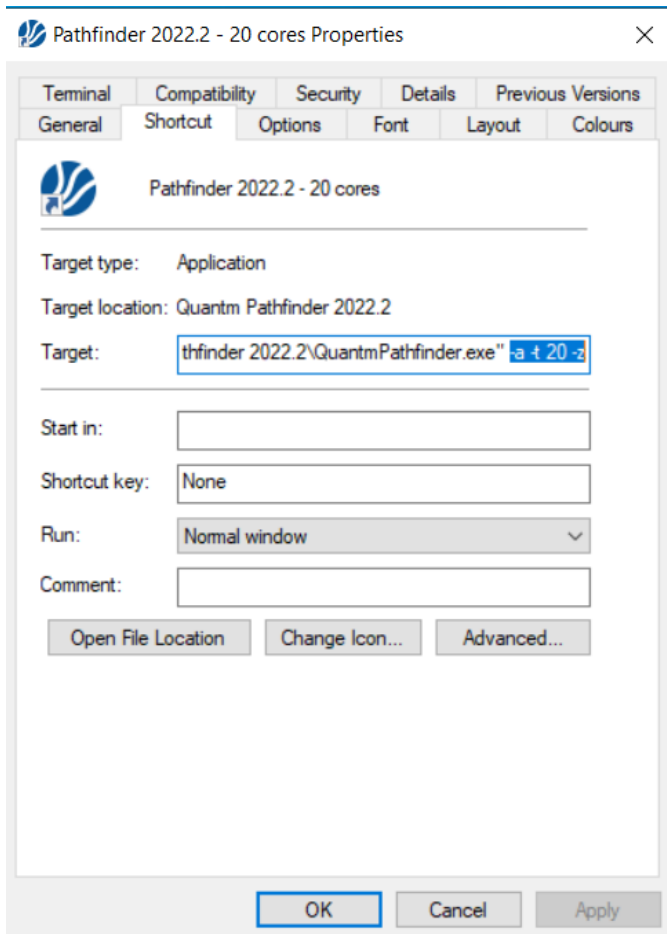


Click Finish to complete the installation.



Two shortcuts will appear on your desktop.





To make the optimization run faster, right click on the pathfinder icon and click properties. Under the shortcut tab insert the blue text behind the text in the target box. The number indicates how many cores (number of simultaneous optimizations) are used.

Reaching Sales, Support, and the Community

For more information, please use these resources:

Quantm Resource Center

Search for release notes, installation guide, license activation guide, learning guides, and technical articles, and more in the [Quantm Resource Center!](#)

Quantm Support email: civil.support@trimble.com

Trimble Connected Construction: Read more [here](#).

